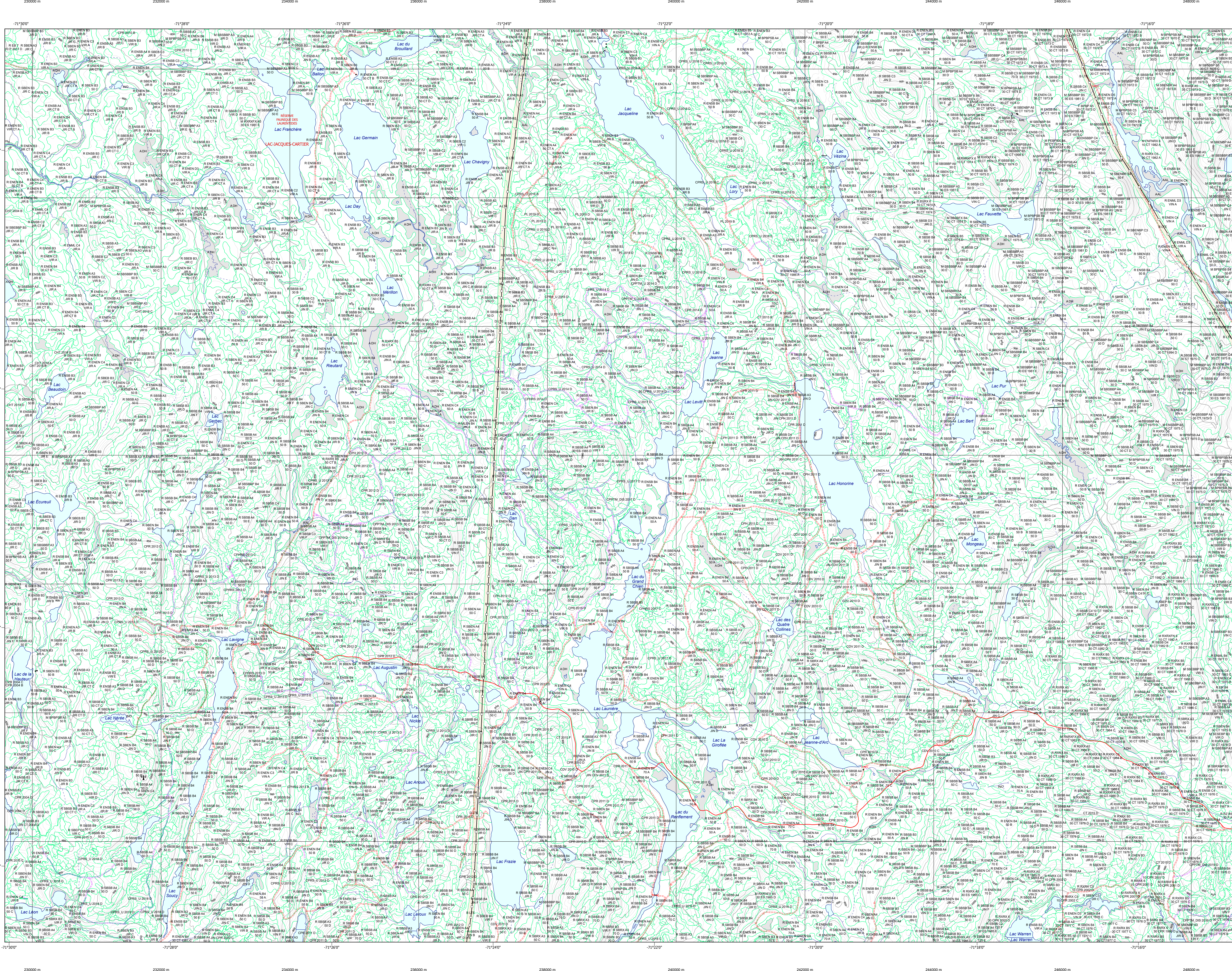


Carte écoforestière



STRATIFICATION ECOFORESTIERE

Table with 4 columns: Code, Description, Improductif, Non forestier. Rows include codes like 11, 12, 13, 14, 15, 16, 17, 18, 19, 20, 21, 22, 23, 24, 25, 26, 27, 28, 29, 30, 31, 32, 33, 34, 35, 36, 37, 38, 39, 40, 41, 42, 43, 44, 45, 46, 47, 48, 49, 50, 51, 52, 53, 54, 55, 56, 57, 58, 59, 60, 61, 62, 63, 64, 65, 66, 67, 68, 69, 70, 71, 72, 73, 74, 75, 76, 77, 78, 79, 80, 81, 82, 83, 84, 85, 86, 87, 88, 89, 90, 91, 92, 93, 94, 95, 96, 97, 98, 99, 100.

Table with 4 columns: Type de hauteur, Tm de hauteur, Improductif, Non forestier. Rows include codes like 1, 2, 3, 4, 5, 6, 7, 8, 9, 10, 11, 12, 13, 14, 15, 16, 17, 18, 19, 20, 21, 22, 23, 24, 25, 26, 27, 28, 29, 30, 31, 32, 33, 34, 35, 36, 37, 38, 39, 40, 41, 42, 43, 44, 45, 46, 47, 48, 49, 50, 51, 52, 53, 54, 55, 56, 57, 58, 59, 60, 61, 62, 63, 64, 65, 66, 67, 68, 69, 70, 71, 72, 73, 74, 75, 76, 77, 78, 79, 80, 81, 82, 83, 84, 85, 86, 87, 88, 89, 90, 91, 92, 93, 94, 95, 96, 97, 98, 99, 100.

TYPES DE COUVERT ET ESSENCES SELON LE PROGRAMME D'INVENTAIRE
Dépassement d'au plus de 75% de la surface totale soumise à l'occupation par les essences résineuses.
FEUILLES
Dépassement d'au plus de 75% de la surface totale soumise à l'occupation par les essences feuillues.
MELANGES
Mélange de deux essences feuillues et résineuses occupent respectivement plus de 25% et plus de 75% de la surface totale soumise.

Table with 3 columns: CODES ESSENCES RESINEUSES, CODES ESSENCES FEUILLEUSES, CODES ESSENCES FEUILLEUSES ET M. Rows include codes like 1, 2, 3, 4, 5, 6, 7, 8, 9, 10, 11, 12, 13, 14, 15, 16, 17, 18, 19, 20, 21, 22, 23, 24, 25, 26, 27, 28, 29, 30, 31, 32, 33, 34, 35, 36, 37, 38, 39, 40, 41, 42, 43, 44, 45, 46, 47, 48, 49, 50, 51, 52, 53, 54, 55, 56, 57, 58, 59, 60, 61, 62, 63, 64, 65, 66, 67, 68, 69, 70, 71, 72, 73, 74, 75, 76, 77, 78, 79, 80, 81, 82, 83, 84, 85, 86, 87, 88, 89, 90, 91, 92, 93, 94, 95, 96, 97, 98, 99, 100.

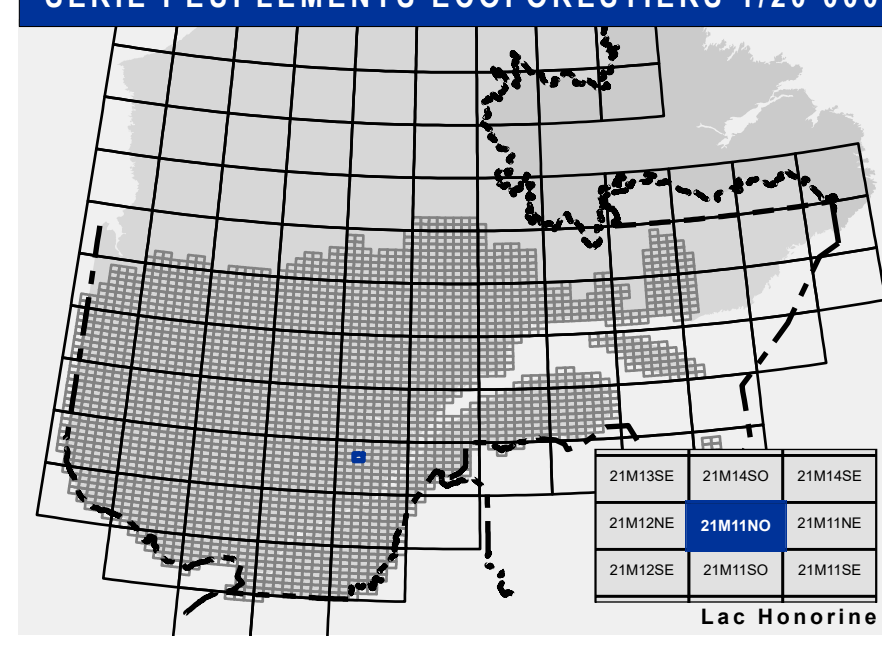
Table with 10 columns: Indicateur, Moyenne des densités dominantes et co-dominantes. Rows include codes like 1, 2, 3, 4, 5, 6, 7, 8, 9, 10, 11, 12, 13, 14, 15, 16, 17, 18, 19, 20, 21, 22, 23, 24, 25, 26, 27, 28, 29, 30, 31, 32, 33, 34, 35, 36, 37, 38, 39, 40, 41, 42, 43, 44, 45, 46, 47, 48, 49, 50, 51, 52, 53, 54, 55, 56, 57, 58, 59, 60, 61, 62, 63, 64, 65, 66, 67, 68, 69, 70, 71, 72, 73, 74, 75, 76, 77, 78, 79, 80, 81, 82, 83, 84, 85, 86, 87, 88, 89, 90, 91, 92, 93, 94, 95, 96, 97, 98, 99, 100.

Table with 10 columns: REPLEMENTS ETAGES, 10, 20, 30, 40, 50, 60, 70, 80, 90, 100. Rows include codes like 1, 2, 3, 4, 5, 6, 7, 8, 9, 10, 11, 12, 13, 14, 15, 16, 17, 18, 19, 20, 21, 22, 23, 24, 25, 26, 27, 28, 29, 30, 31, 32, 33, 34, 35, 36, 37, 38, 39, 40, 41, 42, 43, 44, 45, 46, 47, 48, 49, 50, 51, 52, 53, 54, 55, 56, 57, 58, 59, 60, 61, 62, 63, 64, 65, 66, 67, 68, 69, 70, 71, 72, 73, 74, 75, 76, 77, 78, 79, 80, 81, 82, 83, 84, 85, 86, 87, 88, 89, 90, 91, 92, 93, 94, 95, 96, 97, 98, 99, 100.

Table with 3 columns: CODES, DESCRIPTION, TAUX D'INCLINAISON. Rows include codes like 1, 2, 3, 4, 5, 6, 7, 8, 9, 10, 11, 12, 13, 14, 15, 16, 17, 18, 19, 20, 21, 22, 23, 24, 25, 26, 27, 28, 29, 30, 31, 32, 33, 34, 35, 36, 37, 38, 39, 40, 41, 42, 43, 44, 45, 46, 47, 48, 49, 50, 51, 52, 53, 54, 55, 56, 57, 58, 59, 60, 61, 62, 63, 64, 65, 66, 67, 68, 69, 70, 71, 72, 73, 74, 75, 76, 77, 78, 79, 80, 81, 82, 83, 84, 85, 86, 87, 88, 89, 90, 91, 92, 93, 94, 95, 96, 97, 98, 99, 100.

Table with 3 columns: CODE NON FORESTIER, CODE NON FORESTIER, CODE NON FORESTIER. Rows include codes like 1, 2, 3, 4, 5, 6, 7, 8, 9, 10, 11, 12, 13, 14, 15, 16, 17, 18, 19, 20, 21, 22, 23, 24, 25, 26, 27, 28, 29, 30, 31, 32, 33, 34, 35, 36, 37, 38, 39, 40, 41, 42, 43, 44, 45, 46, 47, 48, 49, 50, 51, 52, 53, 54, 55, 56, 57, 58, 59, 60, 61, 62, 63, 64, 65, 66, 67, 68, 69, 70, 71, 72, 73, 74, 75, 76, 77, 78, 79, 80, 81, 82, 83, 84, 85, 86, 87, 88, 89, 90, 91, 92, 93, 94, 95, 96, 97, 98, 99, 100.

SERIE PEULEMENTS ECOFORESTIERS 1/20 000



Legend for the map showing symbols and colors for various features: Voies de communication et ponts (communication lines and bridges), Obstacles et infrastructures (obstacles and infrastructure), Courbe de niveau (contour lines), Peuplement écoforestier (eco-forest stands), Matadonnées (metadata), Sources (sources), Informations forestières (forest information), Réalisation (realization), and Avertissement (warning).

Technical information block containing metadata and project details: Donnée (data source), Assise cartographique (topographic base), Informations forestières (forest inventory details: 2014 program, 2022 date), Réalisation (production: Ministère des Forêts, de la Faune, et des Parcs), and Avertissement (warning: not for legal use, based on MERN data).

Source and contact information: Donnée (data source: Asse cartographique), Informations forestières (forest information: 2014 program, 2022 date), Réalisation (realization: Ministère des Forêts, de la Faune, et des Parcs), and Avertissement (warning: not for legal use, based on MERN data).