

Carte écoforestière

STRATIFICATION ÉCOFORESTIÈRE

Paramètres utilisés pour la cartographie

Table with 5 columns: Code, Description, +7m, -7m, Improductif, Non Forestier. It lists various codes for forest types and their characteristics.

Table titled 'Exemple d'appellation' showing a breakdown of a forest code into its components: height, intervention, and origin.

TYPES DE COUVERT ET ESSENCES
Les résineux constituent 75% et plus de la surface terrière du peuplement.
MIXTE À DOMINANCE RÉSINEUSE
Les résineux constituent de 55% à 74% de la surface terrière du peuplement.

Table with 3 columns: CODE RÉSINEUSES, CODE FEUILLUES, CODE FEUILLUES. It lists species codes and their common names.

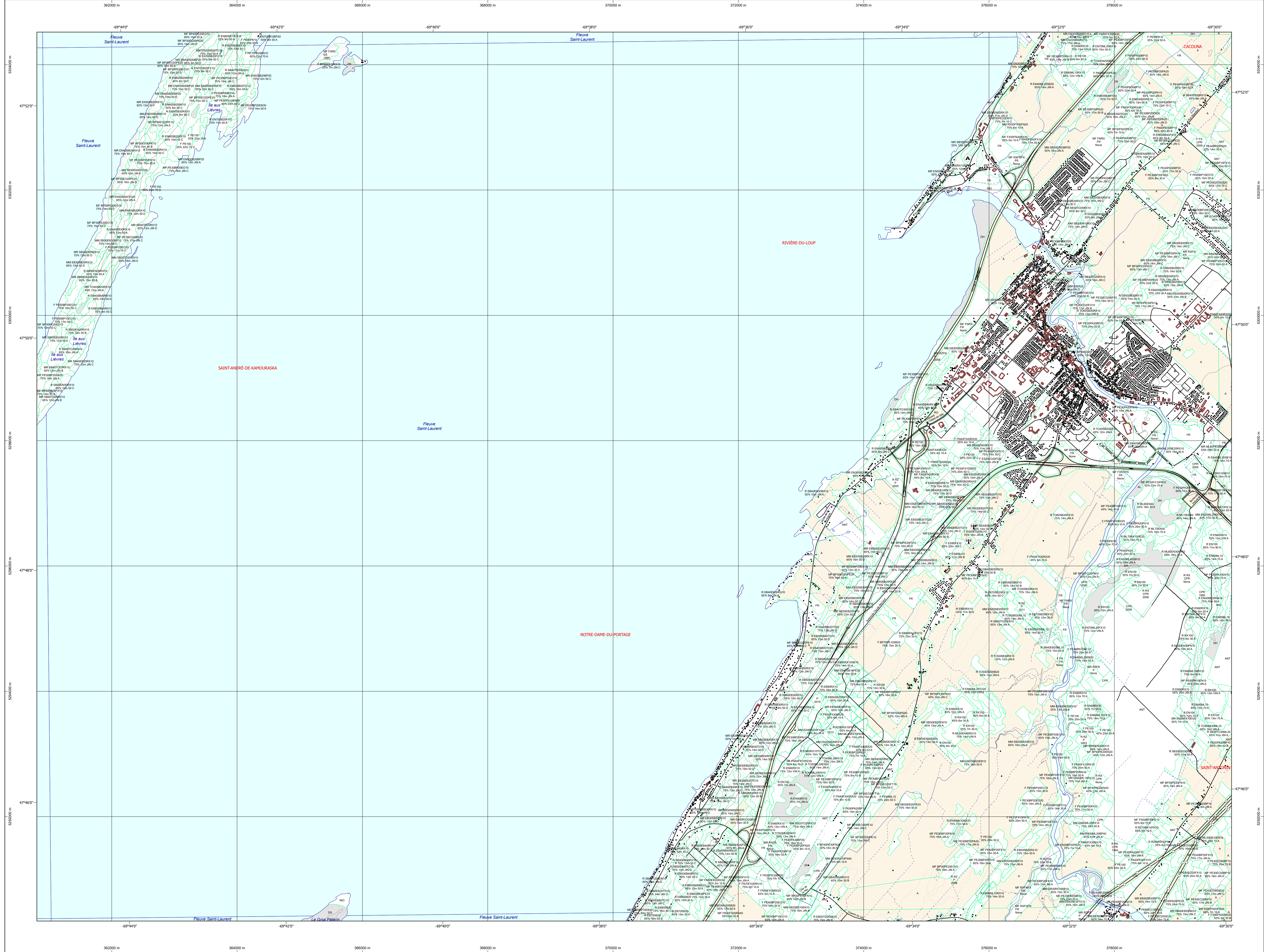
Table titled 'CLASSES D'ÂGE' showing age classes and their corresponding tree heights.

Table titled 'Etagement' showing vertical structure types and their criteria based on height and cover.

Table with two columns: CODE PERTURBATIONS D'ORIGINE and CODE INTERVENTIONS PARTIELLES. It lists various types of forest disturbances and management interventions.

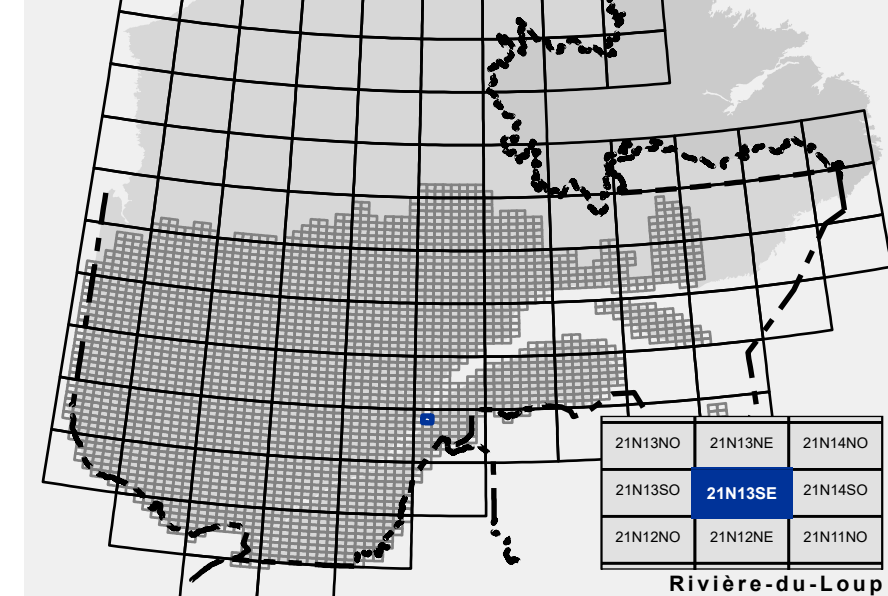
Table with two columns: TERRAINS FORESTIERS IMPRODUCTIFS and CLASSES DE PENTE. It lists terrain codes and slope classes with their respective inclinations.

Table with two columns: CODE NON FORESTIER and CODE NON FORESTIER. It lists codes for non-forest areas and their types.



21N13SE
(21N13-200-0102)

SÉRIE PEUPELEMENTS ÉCOFORESTIERS 1/20 000



Voies de communication et ponts

- List of symbols and descriptions for roads, rivers, and infrastructure like bridges and dams.

Obstacles et infrastructures

- List of symbols and descriptions for obstacles such as buildings, power lines, and dams.

Courbe de niveau

- List of symbols and descriptions for contour lines, including contour intervals and benchmarks.

Peuplement écoforestier

- List of symbols and descriptions for different types of forest stands.

Métadonnées

Technical data including reference systems, coordinates, datum, and scale.

Sources

Information about the data sources, including the inventory program and the date of production.

Réalisation

Information about the production process, including the responsible ministry and the cartographer.

AVERTISSEMENT

Disclaimer regarding the use of the map and the responsibility of the user.