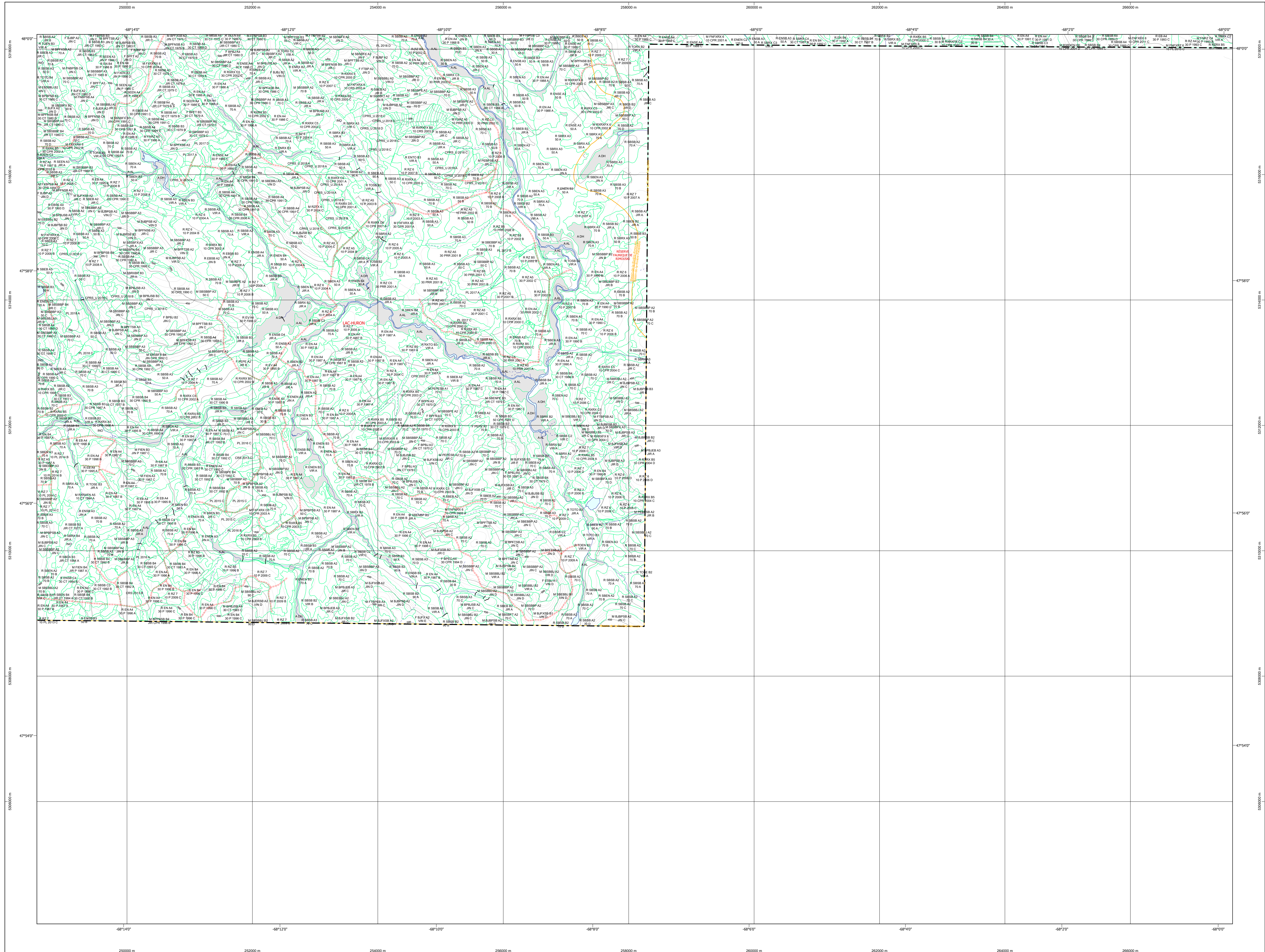


Carte écoforestière



STRATIFICATION ÉCOFORESTIÈRE

Paramètres utilisés pour la cartographie

| Code | Type de description | → 7m | → 1m | Improductif | Non forestier |
|------|---------------------|------|------|-------------|---------------|
| 0 | Épave | X | X | X | X |
| 1 | Forêt | X | X | X | X |
| 2 | Forêt | X | X | X | X |
| 3 | Forêt | X | X | X | X |
| 4 | Forêt | X | X | X | X |
| 5 | Forêt | X | X | X | X |
| 6 | Forêt | X | X | X | X |
| 7 | Forêt | X | X | X | X |
| 8 | Forêt | X | X | X | X |
| 9 | Forêt | X | X | X | X |
| 10 | Forêt | X | X | X | X |
| 11 | Forêt | X | X | X | X |
| 12 | Forêt | X | X | X | X |
| 13 | Forêt | X | X | X | X |
| 14 | Forêt | X | X | X | X |
| 15 | Forêt | X | X | X | X |
| 16 | Forêt | X | X | X | X |
| 17 | Forêt | X | X | X | X |
| 18 | Forêt | X | X | X | X |
| 19 | Forêt | X | X | X | X |
| 20 | Forêt | X | X | X | X |
| 21 | Forêt | X | X | X | X |
| 22 | Forêt | X | X | X | X |
| 23 | Forêt | X | X | X | X |
| 24 | Forêt | X | X | X | X |
| 25 | Forêt | X | X | X | X |
| 26 | Forêt | X | X | X | X |
| 27 | Forêt | X | X | X | X |
| 28 | Forêt | X | X | X | X |
| 29 | Forêt | X | X | X | X |
| 30 | Forêt | X | X | X | X |
| 31 | Forêt | X | X | X | X |
| 32 | Forêt | X | X | X | X |
| 33 | Forêt | X | X | X | X |
| 34 | Forêt | X | X | X | X |
| 35 | Forêt | X | X | X | X |
| 36 | Forêt | X | X | X | X |
| 37 | Forêt | X | X | X | X |
| 38 | Forêt | X | X | X | X |
| 39 | Forêt | X | X | X | X |
| 40 | Forêt | X | X | X | X |
| 41 | Forêt | X | X | X | X |
| 42 | Forêt | X | X | X | X |
| 43 | Forêt | X | X | X | X |
| 44 | Forêt | X | X | X | X |
| 45 | Forêt | X | X | X | X |
| 46 | Forêt | X | X | X | X |
| 47 | Forêt | X | X | X | X |
| 48 | Forêt | X | X | X | X |
| 49 | Forêt | X | X | X | X |
| 50 | Forêt | X | X | X | X |
| 51 | Forêt | X | X | X | X |
| 52 | Forêt | X | X | X | X |
| 53 | Forêt | X | X | X | X |
| 54 | Forêt | X | X | X | X |
| 55 | Forêt | X | X | X | X |
| 56 | Forêt | X | X | X | X |
| 57 | Forêt | X | X | X | X |
| 58 | Forêt | X | X | X | X |
| 59 | Forêt | X | X | X | X |
| 60 | Forêt | X | X | X | X |
| 61 | Forêt | X | X | X | X |
| 62 | Forêt | X | X | X | X |
| 63 | Forêt | X | X | X | X |
| 64 | Forêt | X | X | X | X |
| 65 | Forêt | X | X | X | X |
| 66 | Forêt | X | X | X | X |
| 67 | Forêt | X | X | X | X |
| 68 | Forêt | X | X | X | X |
| 69 | Forêt | X | X | X | X |
| 70 | Forêt | X | X | X | X |
| 71 | Forêt | X | X | X | X |
| 72 | Forêt | X | X | X | X |
| 73 | Forêt | X | X | X | X |
| 74 | Forêt | X | X | X | X |
| 75 | Forêt | X | X | X | X |
| 76 | Forêt | X | X | X | X |
| 77 | Forêt | X | X | X | X |
| 78 | Forêt | X | X | X | X |
| 79 | Forêt | X | X | X | X |
| 80 | Forêt | X | X | X | X |
| 81 | Forêt | X | X | X | X |
| 82 | Forêt | X | X | X | X |
| 83 | Forêt | X | X | X | X |
| 84 | Forêt | X | X | X | X |
| 85 | Forêt | X | X | X | X |
| 86 | Forêt | X | X | X | X |
| 87 | Forêt | X | X | X | X |
| 88 | Forêt | X | X | X | X |
| 89 | Forêt | X | X | X | X |
| 90 | Forêt | X | X | X | X |
| 91 | Forêt | X | X | X | X |
| 92 | Forêt | X | X | X | X |
| 93 | Forêt | X | X | X | X |
| 94 | Forêt | X | X | X | X |
| 95 | Forêt | X | X | X | X |
| 96 | Forêt | X | X | X | X |
| 97 | Forêt | X | X | X | X |
| 98 | Forêt | X | X | X | X |
| 99 | Forêt | X | X | X | X |
| 100 | Forêt | X | X | X | X |

Exemple d'appellation

| Code | Type de description | → 7m | → 1m | Improductif | Non forestier |
|------|---------------------|------|------|-------------|---------------|
| 01 | Forêt | X | X | X | X |
| 02 | Forêt | X | X | X | X |
| 03 | Forêt | X | X | X | X |
| 04 | Forêt | X | X | X | X |
| 05 | Forêt | X | X | X | X |
| 06 | Forêt | X | X | X | X |
| 07 | Forêt | X | X | X | X |
| 08 | Forêt | X | X | X | X |
| 09 | Forêt | X | X | X | X |
| 10 | Forêt | X | X | X | X |
| 11 | Forêt | X | X | X | X |
| 12 | Forêt | X | X | X | X |
| 13 | Forêt | X | X | X | X |
| 14 | Forêt | X | X | X | X |
| 15 | Forêt | X | X | X | X |
| 16 | Forêt | X | X | X | X |
| 17 | Forêt | X | X | X | X |
| 18 | Forêt | X | X | X | X |
| 19 | Forêt | X | X | X | X |
| 20 | Forêt | X | X | X | X |
| 21 | Forêt | X | X | X | X |
| 22 | Forêt | X | X | X | X |
| 23 | Forêt | X | X | X | X |
| 24 | Forêt | X | X | X | X |
| 25 | Forêt | X | X | X | X |
| 26 | Forêt | X | X | X | X |
| 27 | Forêt | X | X | X | X |
| 28 | Forêt | X | X | X | X |
| 29 | Forêt | X | X | X | X |
| 30 | Forêt | X | X | X | X |
| 31 | Forêt | X | X | X | X |
| 32 | Forêt | X | X | X | X |
| 33 | Forêt | X | X | X | X |
| 34 | Forêt | X | X | X | X |
| 35 | Forêt | X | X | X | X |
| 36 | Forêt | X | X | X | X |
| 37 | Forêt | X | X | X | X |
| 38 | Forêt | X | X | X | X |
| 39 | Forêt | X | X | X | X |
| 40 | Forêt | X | X | X | X |
| 41 | Forêt | X | X | X | X |
| 42 | Forêt | X | X | X | X |
| 43 | Forêt | X | X | X | X |
| 44 | Forêt | X | X | X | X |
| 45 | Forêt | X | X | X | X |
| 46 | Forêt | X | X | X | X |
| 47 | Forêt | X | X | X | X |
| 48 | Forêt | X | X | X | X |
| 49 | Forêt | X | X | X | X |
| 50 | Forêt | X | X | X | X |
| 51 | Forêt | X | X | X | X |
| 52 | Forêt | X | X | X | X |
| 53 | Forêt | X | X | X | X |
| 54 | Forêt | X | X | X | X |
| 55 | Forêt | X | X | X | X |
| 56 | Forêt | X | X | X | X |
| 57 | Forêt | X | X | X | X |
| 58 | Forêt | X | X | X | X |
| 59 | Forêt | X | X | X | X |
| 60 | Forêt | X | X | X | X |
| 61 | Forêt | X | X | X | X |
| 62 | Forêt | X | X | X | X |
| 63 | Forêt | X | X | X | X |
| 64 | Forêt | X | X | X | X |
| 65 | Forêt | X | X | X | X |
| 66 | Forêt | X | X | X | X |
| 67 | Forêt | X | X | X | X |
| 68 | Forêt | X | X | X | X |
| 69 | Forêt | X | X | X | X |
| 70 | Forêt | X | X | X | X |
| 71 | Forêt | X | X | X | X |
| 72 | Forêt | X | X | X | X |
| 73 | Forêt | X | X | X | X |
| 74 | Forêt | X | X | X | X |
| 75 | Forêt | X | X | X | X |
| 76 | Forêt | X | X | X | X |
| 77 | Forêt | X | X | X | X |
| 78 | Forêt | X | X | X | X |
| 79 | Forêt | X | X | X | X |
| 80 | Forêt | X | X | X | X |
| 81 | Forêt | X | X | X | X |
| 82 | Forêt | X | X | X | X |
| 83 | Forêt | X | X | X | X |
| 84 | Forêt | X | X | X | X |
| 85 | Forêt | X | X | X | X |
| 86 | Forêt | X | X | X | X |
| 87 | Forêt | X | X | X | X |
| 88 | Forêt | X | X | X | X |
| 89 | Forêt | X | X | X | X |
| 90 | Forêt | X | X | X | X |
| 91 | Forêt | X | X | X | X |
| 92 | Forêt | X | X | X | X |
| 93 | Forêt | X | X | X | X |
| 94 | Forêt | X | X | X | X |
| 95 | Forêt | X | X | X | X |
| 96 | Forêt | X | X | X | X |
| 97 | Forêt | X | X | X | X |
| 98 | Forêt | X | X | X | X |
| 99 | Forêt | X | X | X | X |
| 100 | Forêt | X | X | X | X |

TYPES DE COUVERT ET ESSENCES SELON LE PROGRAMME D'INVENTAIRE

RÉSINEUX
Couverture d'au plus de 75% de la surface terrière totale et occupée par les essences résineuses.

FEUILLEUX
Couverture d'au plus de 75% de la surface terrière totale et occupée par les essences feuillues.

MÉLANGES
Couverture d'au moins 25% de résineux et d'au moins 25% de feuillus.

| CODE | ESSENCE RÉSINEUSE #1 | CODE | ESSENCE FEUILLEUSE #1 | CODE | ESSENCE FEUILLEUSE #2 |
|------|----------------------|------|-----------------------|------|-----------------------|
| 0 | Épave | 01 | Épave | 01 | Épave |
| 1 | Forêt | 02 | Forêt | 02 | Forêt |
| 2 | Forêt | 03 | Forêt | 03 | Forêt |
| 3 | Forêt | 04 | Forêt | 04 | Forêt |
| 4 | Forêt | 05 | Forêt | 05 | Forêt |
| 5 | Forêt | 06 | Forêt | 06 | Forêt |
| 6 | Forêt | 07 | Forêt | 07 | Forêt |
| 7 | Forêt | 08 | Forêt | 08 | Forêt |
| 8 | Forêt | 09 | Forêt | 09 | Forêt |
| 9 | Forêt | 10 | Forêt | 10 | Forêt |
| 10 | Forêt | 11 | Forêt | 11 | Forêt |
| 11 | Forêt | 12 | Forêt | 12 | Forêt |
| 12 | Forêt | 13 | Forêt | 13 | Forêt |
| 13 | Forêt | 14 | Forêt | 14 | Forêt |
| 14 | Forêt | 15 | Forêt | 15 | Forêt |
| 15 | Forêt | 16 | Forêt | 16 | Forêt |
| 16 | Forêt | 17 | Forêt | 17 | Forêt |
| 17 | Forêt | 18 | Forêt | 18 | Forêt |
| 18 | Forêt | 19 | Forêt | 19 | Forêt |
| 19 | Forêt | 20 | Forêt | 20 | Forêt |
| 20 | Forêt | 21 | Forêt | 21 | Forêt |
| 21 | Forêt | 22 | Forêt | 22 | Forêt |
| 22 | Forêt | 23 | Forêt | 23 | Forêt |
| 23 | Forêt | 24 | Forêt | 24 | Forêt |
| 24 | Forêt | 25 | Forêt | 25 | Forêt |
| 25 | Forêt | 26 | Forêt | 26 | Forêt |
| 26 | Forêt | 27 | Forêt | 27 | Forêt |
| 27 | Forêt | 28 | Forêt | 28 | Forêt |
| 28 | Forêt | 29 | Forêt | 29 | Forêt |
| 29 | Forêt | 30 | Forêt | 30 | Forêt |
| 30 | Forêt | 31 | Forêt | 31 | Forêt |
| 31 | Forêt | 32 | Forêt | 32 | Forêt |
| 32 | Forêt | 33 | Forêt | 33 | Forêt |
| 33 | Forêt | 34 | Forêt | 34 | Forêt |
| 34 | Forêt | 35 | Forêt | 35 | Forêt |
| 35 | Forêt | 36 | Forêt | 36 | Forêt |
| 36 | Forêt | 37 | Forêt | 37 | Forêt |
| 37 | Forêt | 38 | Forêt | 38 | Forêt |
| 38 | Forêt | 39 | Forêt | 39 | Forêt |
| 39 | Forêt | 40 | Forêt | 40 | Forêt |
| 40 | Forêt | 41 | | | |