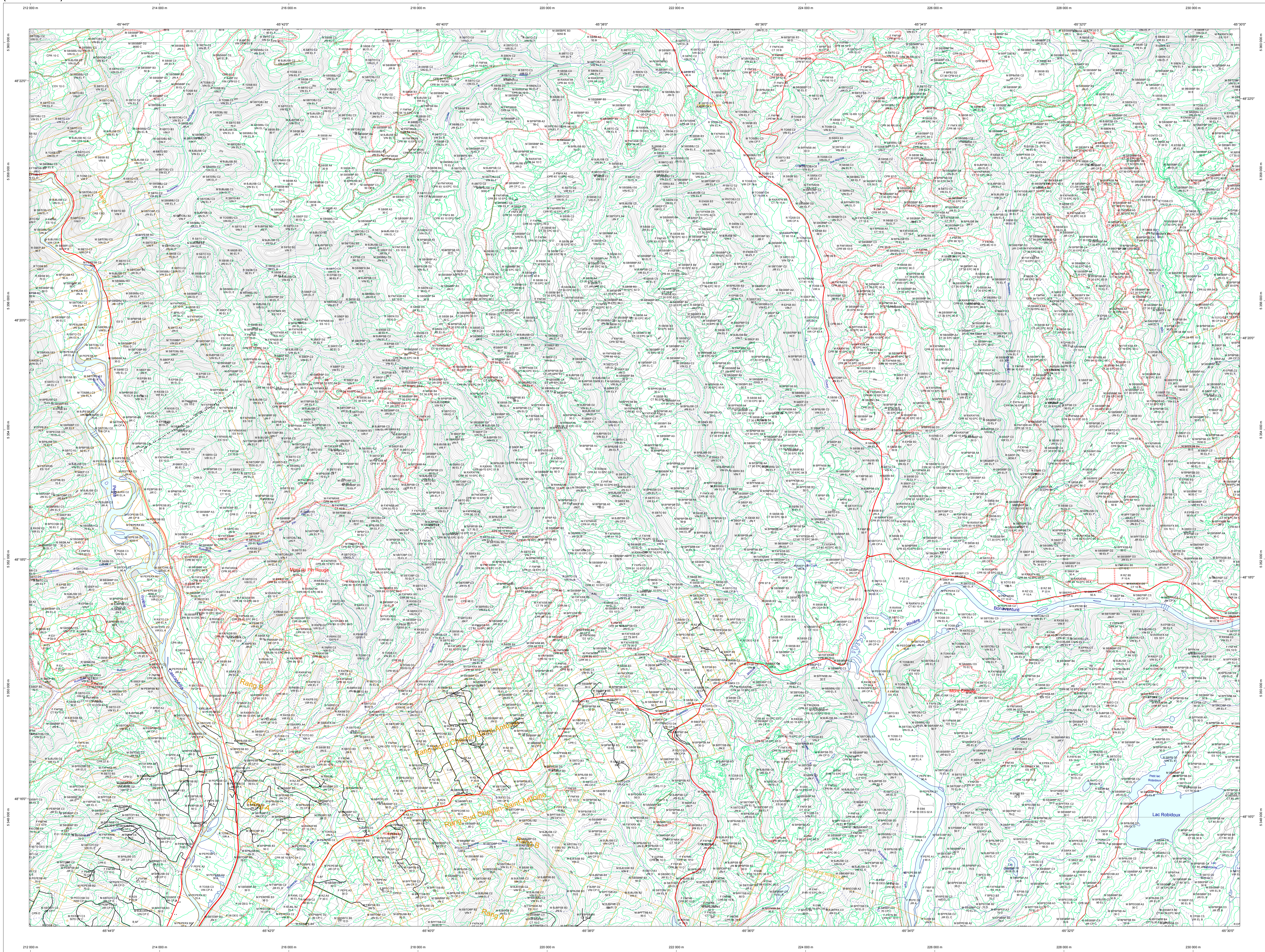


Carte écoforestière



STRATIFICATION ECOFORESTIERE

Table with 6 columns: Code, Description, T1n, T2n, Hydroscop, Non forestier. Lists various forest types and their characteristics.

Table showing 'Exemple d'appellation' with columns for 'T1n de hauteur', 'Hydroscop', and 'Non forestier'. Includes codes like JN, ES, D, etc.

TYPES DE COUVERT ET ESSENCES SELON LE PROGRAMME D'INVENTAIRE

RESERVOIR: Recouvrement supérieur ou égal à 75% de la surface terrain totale et occupé par les essences réservoirs.

MELANGES: Recouvrement par les essences feuillues et résineuses occupant individuellement plus de 25% et moins de 75% de la surface terrain totale.

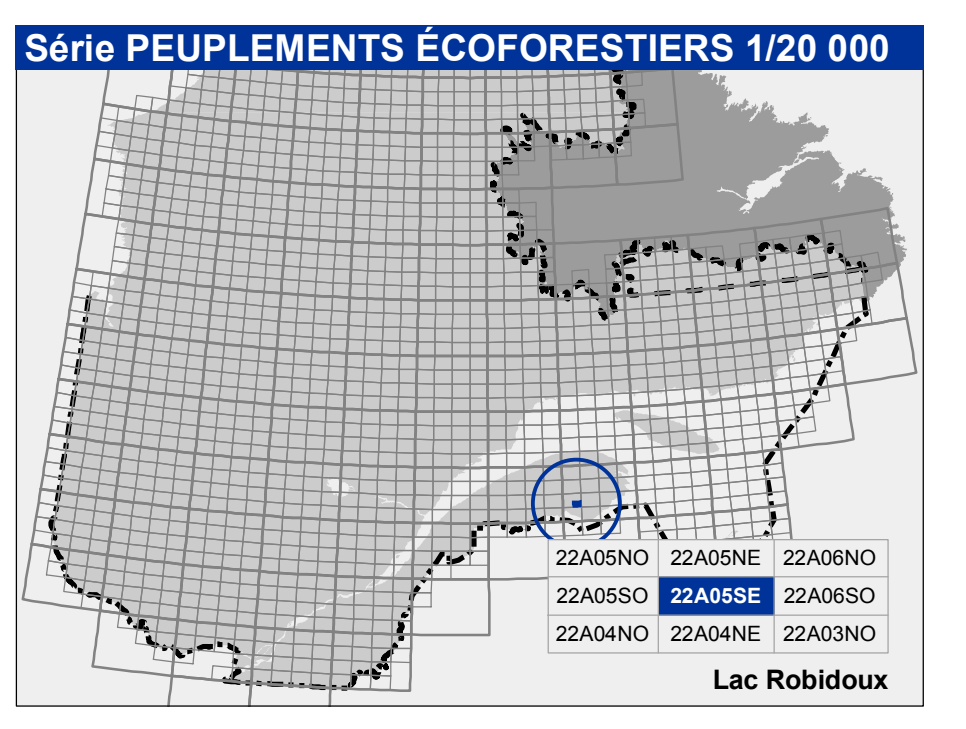
Table with 3 columns: CODE, ESSENCES RESERVEES '1', ESSENCES RESERVEES '2'. Lists tree species like Abies balsamea, Pinus strobus, etc.

Table titled 'INDICES DENSITE-HAUTEUR' showing metrics like 'MAJUSCULES MOYENNES DES LIGNES COMMUNTES ET COORDONNANTES' with numerical values.

Table titled 'CLASSES D'AGE' showing age classes from 10 to 90 years and their corresponding volume and area.

Table titled 'PERTURBATIONS D'ORIGINE' and 'INTERVENTIONS PARTIELLES'. Lists various forest management actions and their codes.

Table titled 'TERRAINS FORESTIERS' and 'CLASSES DE PENTE'. Lists land categories and slope classifications with their respective codes.



Legend for 'Voies de communication et ponts'. Lists symbols for roads, trails, and bridges.

Legend for 'Hydrographie écoforestière'. Lists symbols for water features like streams, ponds, and wetlands.

Legend for 'Peuplement écoforestier'. Lists symbols for different types of forest stands.

Legend for 'Courbes de niveau' and 'Mésodonnes'. Lists symbols for contour lines and specific forest features.

Text describing 'Mésodonnes' (microtopography) and its measurement methods.

Metadata section including 'Sources', 'Données', 'Informations forestières', 'Réalisation', and 'Mises à jour'.