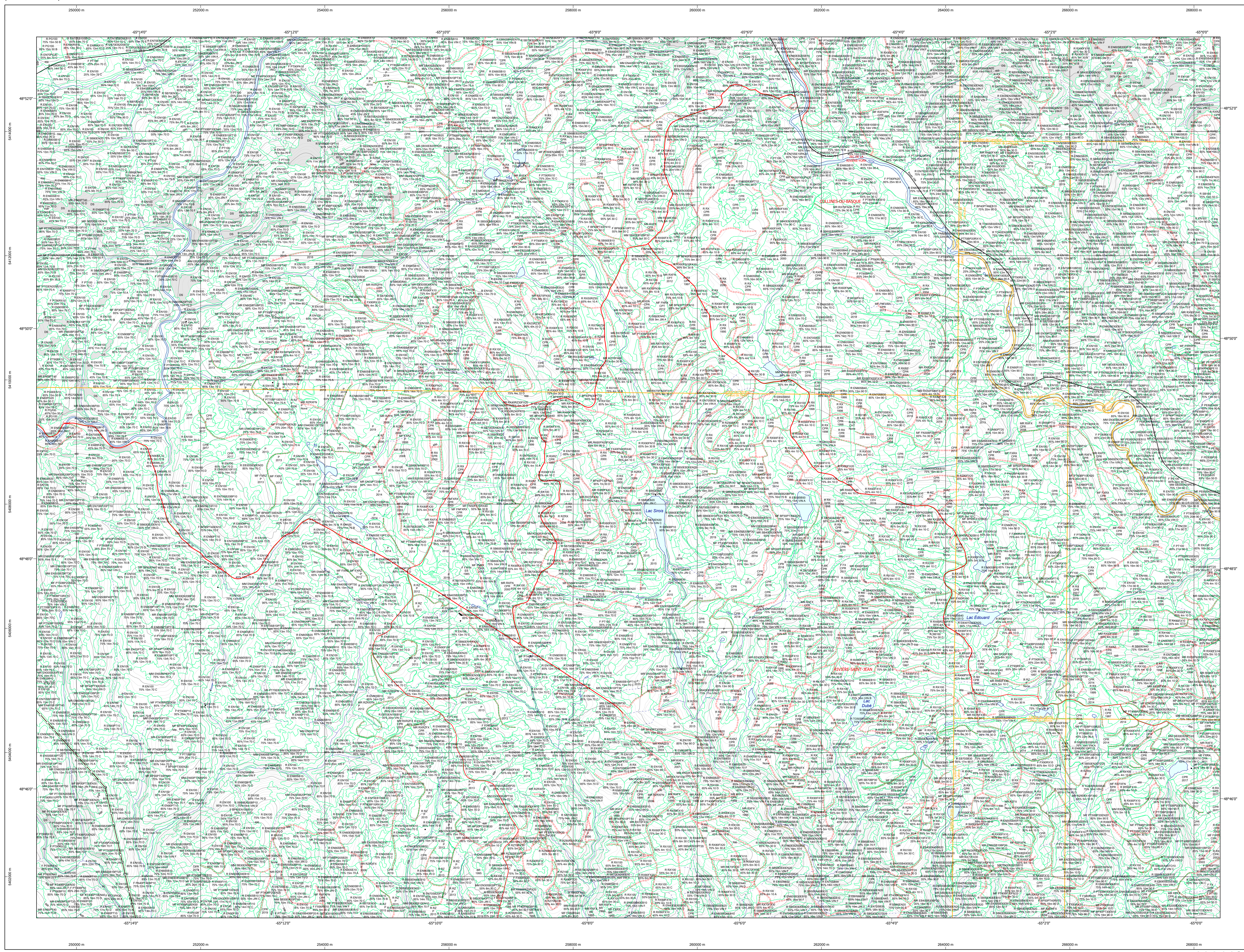


Carte écoforestière



STRATIFICATION ÉCOFORESTIÈRE

Table with 5 columns: Code, Description, +7m, -7m, Non Forestier. It lists various forest types and their characteristics.

Table titled 'Exemple d'appellation' showing codes and descriptions for specific forest types.

TYPES DE COUVERT ET ESSENCES
Les réseaux constituent 75%+ de la surface terrière du peuplement.
RESEUX
Les réseaux constituent 75%+ de la surface terrière du peuplement.

Table with 3 columns: CODE RÉSEUSES, CODE FEUILLEUSES, CODE FEUILLEUSES. It lists various tree species and their codes.

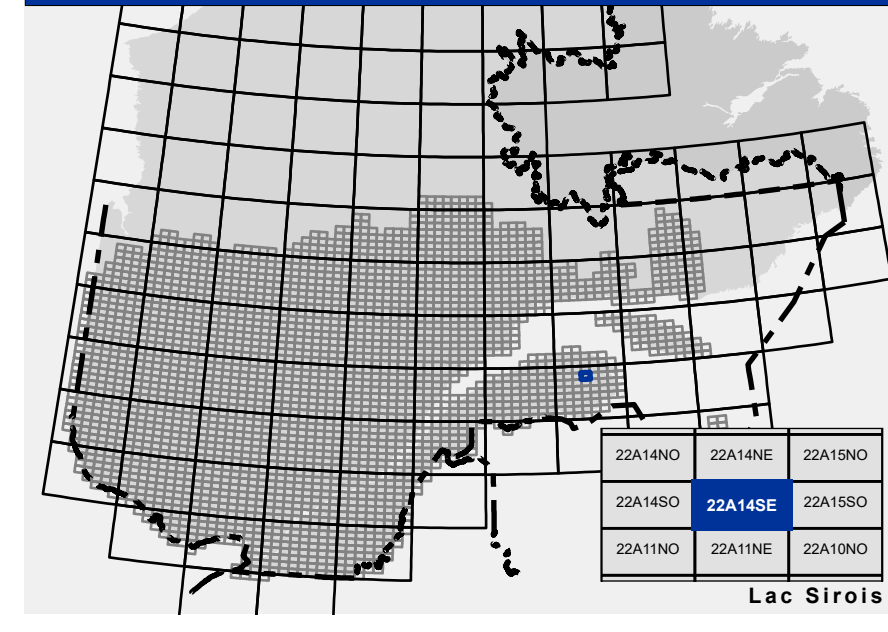
Table titled 'CLASSES D'ÂGE' showing age classes and their corresponding volume percentages.

Table with 2 columns: CODE PERTURBATIONS D'ORIGINE, CODE INTERVENTIONS PARTIELLES. It lists various forest disturbances and management interventions.

Table with 2 columns: CODE TERRAINS FORESTIERS IMPRODUCTIFS, CLASSES DE PENTE. It lists terrain types and slope classes.

Table with 2 columns: CODE NON FORESTIER, CODE NON FORESTIER. It lists various non-forested areas and their codes.

SERIE PEUPLLEMENTS ÉCOFORESTIERS 1/20 000



Legend for the map showing symbols for roads, obstacles, contours, forest types, and management actions.

Table with 2 columns: Sources, Informations forestières. It lists the sources of data and key information about the forest inventory.

Table with 2 columns: Réalisation, Avertissement. It lists the implementation details and a warning regarding the map's use.

