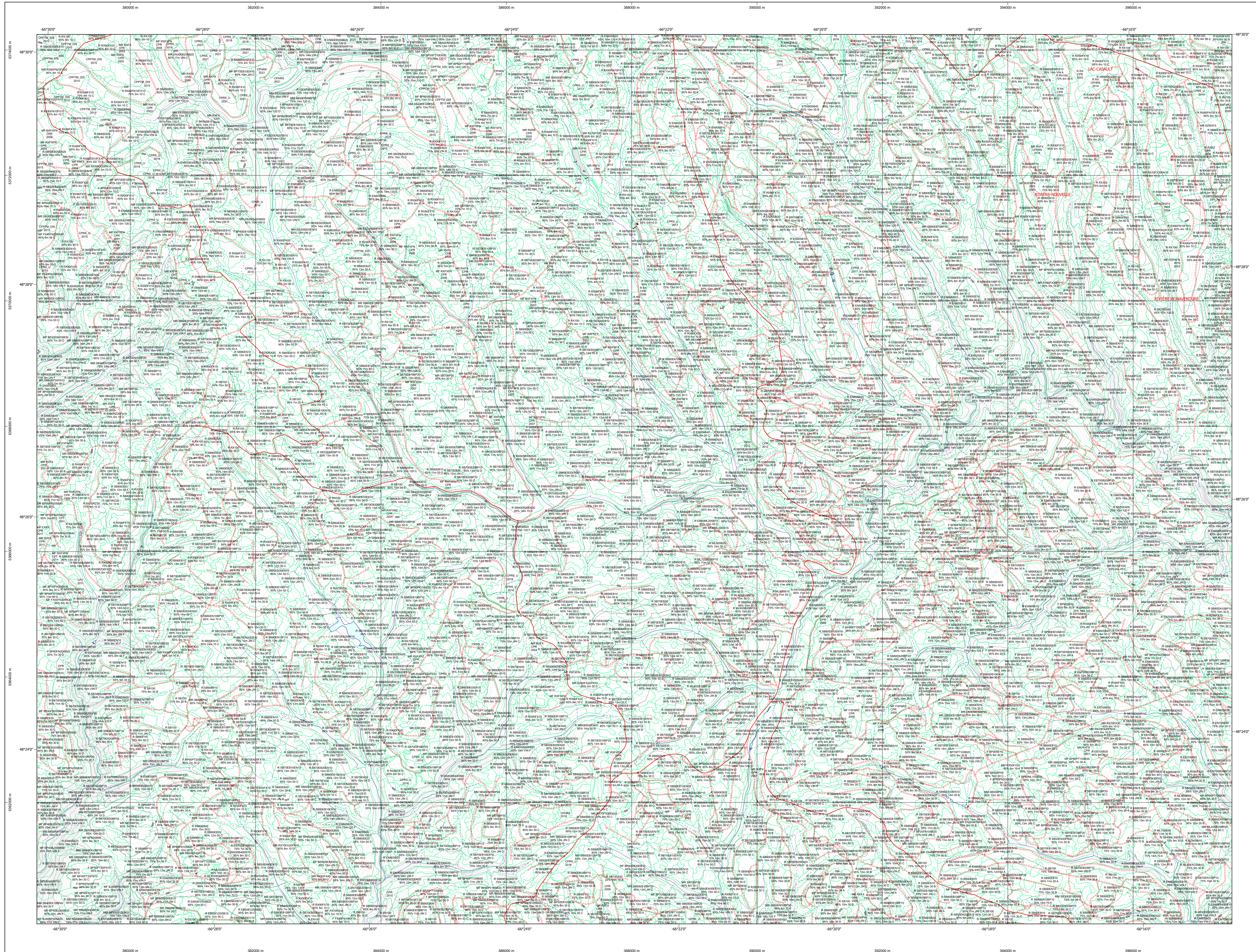


Carte écoforestière

STRATIFICATION ÉCOFORESTIÈRE



Paramètres utilisés pour la cartographie

Code	Description	+7m	-7m	Improductif	Non forestier
ES	Essence de Sa. APT	X	X	X	X
ES	Général de couvert forestier (NF)	X	X	X	X
ES	Hauteur (mètres pds)	X	X	X	X
CT	Intervention d'origine	X	X	X	X
2007	Année d'intervention d'origine	X	X	X	X
ES	Intervention partielle	X	X	X	X
2018	Année d'intervention partielle	X	X	X	X
ES	Classe de coupe	X	X	X	X
ES	Cote de coupe (m. Au. APT)	X	X	X	X

Le dénivelé est estimé par différence, soit avec des valeurs ± 5%, à l'exception de la valeur (25% (25 ± 25%))

Exemple d'appellation

+7m de hauteur	-7m de hauteur	Intervention d'origine	Intervention partielle	Improductif	Non forestier
F 75% 12m JN10	F 75% 4m 20 0	R 2007	ES	DM	NF

TYPES DE COUVERT ET ESSENCES
Les résineux constituent 75% et plus de la surface terrière du peuplement.

MIXTE À DOMINANCE RÉSINEUSE
Les résineux constituent de 55% à 74% de la surface terrière du peuplement.

MIXTE SANS DOMINANCE
Les résineux constituent de 45% à 54% de la surface terrière du peuplement.

MIXTE À DOMINANCE FEUILLEUSE
Les feuillus constituent de 25% à 44% de la surface terrière du peuplement.

FEUILLEUX
Les feuillus constituent moins de 25% de la surface terrière du peuplement.

CODE RÉSINEUSES	CODE FEUILLEUSES	CODE FEUILLEUSES
EB	BG	FO
EN	BU	FP
EU	BU	FR
EV	CB	FS
EV	CC	FT
MA	CC	FX
MA	CC	FZ
ML	CC	FA
ML	CC	FB
ML	CC	FC
ML	CC	FD
ML	CC	FE
ML	CC	FF
ML	CC	FG
ML	CC	FH
ML	CC	FI
ML	CC	FJ
ML	CC	FK
ML	CC	FL
ML	CC	FM
ML	CC	FN
ML	CC	FO
ML	CC	FP
ML	CC	FR
ML	CC	FS
ML	CC	FT
ML	CC	FX
ML	CC	FZ
ML	CC	FA
ML	CC	FB
ML	CC	FC
ML	CC	FD
ML	CC	FE
ML	CC	FF
ML	CC	FG
ML	CC	FH
ML	CC	FI
ML	CC	FJ
ML	CC	FK
ML	CC	FL
ML	CC	FM
ML	CC	FN
ML	CC	FO
ML	CC	FP
ML	CC	FR
ML	CC	FS
ML	CC	FT
ML	CC	FX
ML	CC	FZ
ML	CC	FA
ML	CC	FB
ML	CC	FC
ML	CC	FD
ML	CC	FE
ML	CC	FF
ML	CC	FG
ML	CC	FH
ML	CC	FI
ML	CC	FJ
ML	CC	FK
ML	CC	FL
ML	CC	FM
ML	CC	FN
ML	CC	FO
ML	CC	FP
ML	CC	FR
ML	CC	FS
ML	CC	FT
ML	CC	FX
ML	CC	FZ
ML	CC	FA
ML	CC	FB
ML	CC	FC
ML	CC	FD
ML	CC	FE
ML	CC	FF
ML	CC	FG
ML	CC	FH
ML	CC	FI
ML	CC	FJ
ML	CC	FK
ML	CC	FL
ML	CC	FM
ML	CC	FN
ML	CC	FO
ML	CC	FP
ML	CC	FR
ML	CC	FS
ML	CC	FT
ML	CC	FX
ML	CC	FZ
ML	CC	FA
ML	CC	FB
ML	CC	FC
ML	CC	FD
ML	CC	FE
ML	CC	FF
ML	CC	FG
ML	CC	FH
ML	CC	FI
ML	CC	FJ
ML	CC	FK
ML	CC	FL
ML	CC	FM
ML	CC	FN
ML	CC	FO
ML	CC	FP
ML	CC	FR
ML	CC	FS
ML	CC	FT
ML	CC	FX
ML	CC	FZ
ML	CC	FA
ML	CC	FB
ML	CC	FC
ML	CC	FD
ML	CC	FE
ML	CC	FF
ML	CC	FG
ML	CC	FH
ML	CC	FI
ML	CC	FJ
ML	CC	FK
ML	CC	FL
ML	CC	FM
ML	CC	FN
ML	CC	FO
ML	CC	FP
ML	CC	FR
ML	CC	FS
ML	CC	FT
ML	CC	FX
ML	CC	FZ
ML	CC	FA
ML	CC	FB
ML	CC	FC
ML	CC	FD
ML	CC	FE
ML	CC	FF
ML	CC	FG
ML	CC	FH
ML	CC	FI
ML	CC	FJ
ML	CC	FK
ML	CC	FL
ML	CC	FM
ML	CC	FN
ML	CC	FO
ML	CC	FP
ML	CC	FR
ML	CC	FS
ML	CC	FT
ML	CC	FX
ML	CC	FZ
ML	CC	FA
ML	CC	FB
ML	CC	FC
ML	CC	FD
ML	CC	FE
ML	CC	FF
ML	CC	FG
ML	CC	FH
ML	CC	FI
ML	CC	FJ
ML	CC	FK
ML	CC	FL
ML	CC	FM
ML	CC	FN
ML	CC	FO
ML	CC	FP
ML	CC	FR
ML	CC	FS
ML	CC	FT
ML	CC	FX
ML	CC	FZ
ML	CC	FA
ML	CC	FB
ML	CC	FC
ML	CC	FD
ML	CC	FE
ML	CC	FF
ML	CC	FG
ML	CC	FH
ML	CC	FI
ML	CC	FJ
ML	CC	FK
ML	CC	FL
ML	CC	FM
ML	CC	FN
ML	CC	FO
ML	CC	FP
ML	CC	FR
ML	CC	FS
ML	CC	FT
ML	CC	FX
ML	CC	FZ
ML	CC	FA
ML	CC	FB
ML	CC	FC
ML	CC	FD
ML	CC	FE
ML	CC	FF
ML	CC	FG
ML	CC	FH
ML	CC	FI
ML	CC	FJ
ML	CC	FK
ML	CC	FL
ML	CC	FM
ML	CC	FN
ML	CC	FO
ML	CC	FP
ML	CC	FR
ML	CC	FS
ML	CC	FT
ML	CC	FX
ML	CC	FZ
ML	CC	FA
ML	CC	FB
ML	CC	FC
ML	CC	FD
ML	CC	FE
ML	CC	FF
ML	CC	FG
ML	CC	FH
ML	CC	FI
ML	CC	FJ
ML	CC	FK
ML	CC	FL
ML	CC	FM
ML	CC	FN
ML	CC	FO
ML	CC	FP
ML	CC	FR
ML	CC	FS
ML	CC	FT
ML	CC	FX
ML	CC	FZ
ML	CC	FA
ML	CC	FB
ML	CC	FC
ML	CC	FD
ML	CC	FE
ML	CC	FF
ML	CC	FG
ML	CC	FH
ML	CC	FI
ML	CC	FJ
ML	CC	FK
ML	CC	FL
ML	CC	FM
ML	CC	FN
ML	CC	FO
ML	CC	FP
ML	CC	FR
ML	CC	FS
ML	CC	FT
ML	CC	FX
ML	CC	FZ
ML	CC	FA
ML	CC	FB
ML	CC	FC
ML	CC	FD
ML	CC	FE
ML	CC	FF
ML	CC	FG
ML	CC	FH
ML	CC	FI
ML	CC	FJ
ML	CC	FK
ML	CC	FL
ML	CC	FM
ML	CC	FN
ML	CC	FO
ML	CC	FP
ML	CC	FR
ML	CC	FS
ML	CC	FT
ML	CC	FX
ML	CC	FZ
ML	CC	FA
ML	CC	FB
ML	CC	FC
ML	CC	FD
ML	CC	FE
ML	CC	FF
ML	CC	FG
ML	CC	FH
ML	CC	FI
ML	CC	FJ
ML	CC	FK
ML	CC	FL
ML	CC	FM
ML	CC	FN
ML	CC	FO
ML	CC	FP
ML	CC	FR
ML	CC	FS
ML	CC	FT
ML	CC	FX
ML	CC	FZ
ML	CC	FA
ML	CC	FB
ML	CC	FC
ML	CC	FD
ML	CC	FE
ML	CC	FF
ML	CC	FG
ML	CC	FH
ML	CC	FI
ML	CC	FJ
ML	CC	FK
ML	CC	FL
ML	CC	FM
ML	CC	FN
ML	CC	FO
ML	CC	FP
ML	CC	FR
ML	CC	FS
ML	CC	FT
ML	CC	FX
ML	CC	FZ
ML	CC	FA
ML	CC	FB
ML	CC	FC
ML	CC	FD
ML	CC	FE
ML	CC	FF
ML	CC	FG
ML	CC	FH
ML	CC	FI
ML	CC	FJ
ML	CC	FK
ML	CC	FL
ML	CC	FM
ML	CC	FN
ML	CC	FO
ML	CC	FP
ML	CC	FR
ML	CC	FS
ML	CC	FT
ML	CC	FX
ML	CC	FZ
ML	CC	FA
ML	CC	FB
ML	CC	FC
ML	CC	FD
ML	CC	FE
ML	CC	FF
ML	CC	FG
ML	CC	FH
ML	CC	FI
ML	CC	FJ
ML	CC	FK
ML	CC	FL
ML	CC	FM
ML	CC	FN
ML	CC	FO
ML	CC	FP
ML	CC	FR
ML	CC	FS
ML	CC	FT
ML	CC	FX
ML	CC	FZ
ML	CC	FA
ML	CC	FB
ML	CC	FC
ML	CC	FD
ML	CC	FE
ML	CC	FF
ML	CC	FG
ML	CC	FH
ML	CC	FI
ML	CC	FJ
ML	CC	FK
ML	CC	FL
ML	CC	FM
ML	CC	FN
ML	CC	FO
ML	CC	FP
ML	CC	FR
ML	CC	FS
ML	CC	FT
ML	CC	FX
ML	CC	FZ
ML	CC	FA
ML	CC	FB
ML	CC	FC
ML	CC	FD
ML	CC	FE
ML	CC	FF
ML	CC	FG
ML	CC	FH
ML	CC	FI
ML	CC	FJ
ML	CC	FK
ML	CC	FL
ML	CC	FM
ML	CC	FN
ML	CC	FO
ML	CC	FP
ML	CC	FR
ML	CC	FS
ML	CC	FT
ML	CC	FX
ML	CC	FZ
ML	CC	FA
ML	CC	FB
ML	CC	FC
ML	CC	FD
ML	CC	FE
ML	CC	FF
ML	CC	FG
ML	CC	FH
ML	CC	FI
ML	CC	FJ
ML	CC	FK
ML	CC	FL
ML	CC	FM
ML	CC	FN
ML	CC	FO
ML	CC	FP
ML	CC	FR
ML	CC	FS
ML	CC	FT
ML	CC	FX
ML	CC	FZ
ML	CC	FA
ML	CC	FB
ML	CC	FC
ML	CC	FD
ML	CC	FE
ML	CC	FF
ML	CC	FG
ML	CC	FH
ML	CC	FI
ML	CC	FJ
ML	CC	FK
ML	CC	FL
ML	CC	FM
ML	CC	FN
ML	CC	FO
ML	CC	FP
ML	CC	FR
ML	CC	FS
ML	CC	FT
ML	CC	FX
ML	CC	FZ
ML	CC	FA
ML	CC	FB
ML	CC	FC
ML	CC	FD
ML	CC	FE
ML	CC	FF
ML	CC	FG
ML	CC	FH
ML	CC	FI
ML	CC	FJ
ML	CC	FK
ML	CC	FL
ML	CC	FM
ML	CC	FN
ML	CC	FO
ML	CC	FP
ML	CC	FR
ML	CC	FS
ML	CC	FT
ML	CC	FX
ML	CC	FZ
ML	CC	FA
ML	CC	FB
ML	CC	FC
ML	CC	FD
ML	CC	FE
ML	CC	FF
ML	CC	FG
ML	CC	FH
ML	CC	FI
ML	CC	