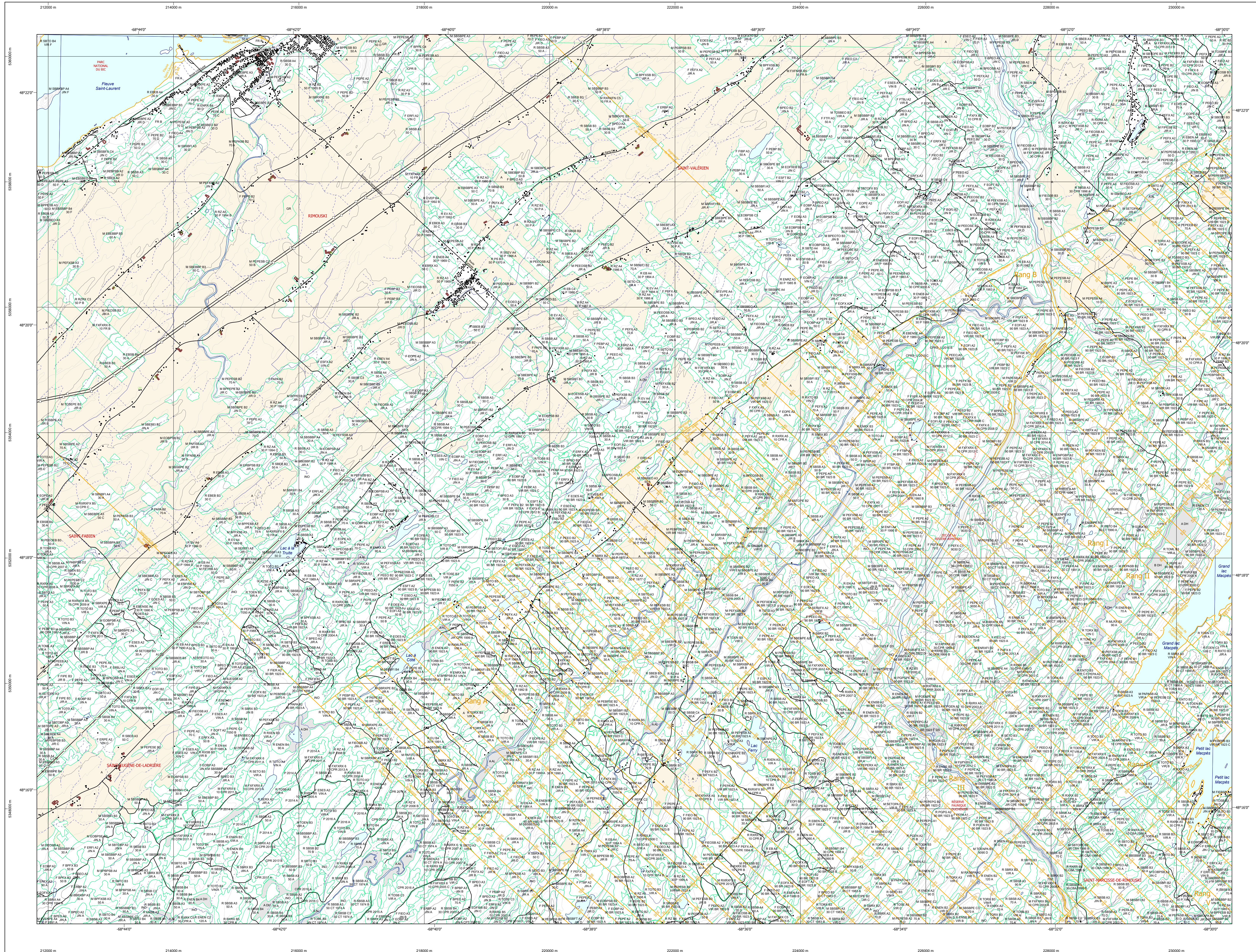


# Carte écoforestière



### STRATIFICATION ÉCOFORESTIÈRE

Table with 5 columns: Code, Type de couv., Description, % Im, % N, Importance, Non forestier. Rows include codes like 0, 1, 2, 3, 4, 5, 6, 7, 8, 9, 10, 11, 12, 13, 14, 15, 16, 17, 18, 19, 20, 21, 22, 23, 24, 25, 26, 27, 28, 29, 30, 31, 32, 33, 34, 35, 36, 37, 38, 39, 40, 41, 42, 43, 44, 45, 46, 47, 48, 49, 50, 51, 52, 53, 54, 55, 56, 57, 58, 59, 60, 61, 62, 63, 64, 65, 66, 67, 68, 69, 70, 71, 72, 73, 74, 75, 76, 77, 78, 79, 80, 81, 82, 83, 84, 85, 86, 87, 88, 89, 90, 91, 92, 93, 94, 95, 96, 97, 98, 99.

Table titled 'Exemple d'appellation' showing codes and their corresponding descriptions for different forest types.

Table titled 'TYPES DE COUVERT ET ESSENCES SELON LE PROGRAMME D'INVENTAIRE' listing forest types and their dominant species.

Table titled 'INDICES DENSITÉ-HAUTEUR' showing density and height indices for different forest types.

Table titled 'CLASSES D'ÂGE' showing age classes for different forest types.

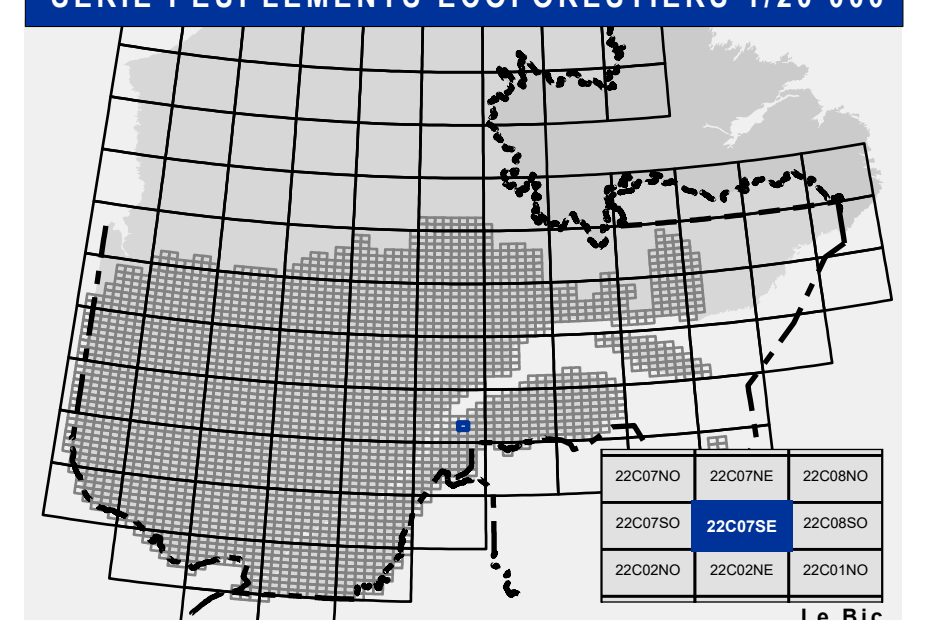
Table titled 'PERTURBATIONS D'ORIGINE' listing various types of forest disturbances.

Table titled 'PERTURBATIONS MOYENNES' listing average forest disturbances.

Table titled 'TERRAINS FORESTIERS' listing different types of forest lands.

Table titled 'CLASSES DE PENTE' listing different slope classes.

### SÉRIE PEUPLLEMENTS ÉCOFORESTIERS 1/20 000



Voies de communication et ponts  
Obstacles et infrastructures  
Hydrographie écoforestière

Peuplement écoforestier  
Matadonnées

Corbe de niveau  
Métadonnées

Peuplement écoforestier  
Métadonnées

Matadonnées

Sources  
Informations forestières

Production  
Avertissement

Classement