

Carte écoforestière

STRATIFICATION ÉCOFORESTIÈRE

Table with 5 columns: Code, Description, +7m, -7m, and Non forestier. It lists various codes for forest types and their characteristics.

Table titled 'Exemple d'appellation' showing an example of how forest codes are combined and interpreted.

TYPES DE COUVERT ET ESSENCES

Text describing different types of forest cover and species, including 'RÉSEAUX', 'MIXTE À DOMINANCE RÉSINEUSE', 'MIXTE À DOMINANCE FEUILLEUSE', and 'FEUILLEUX'.

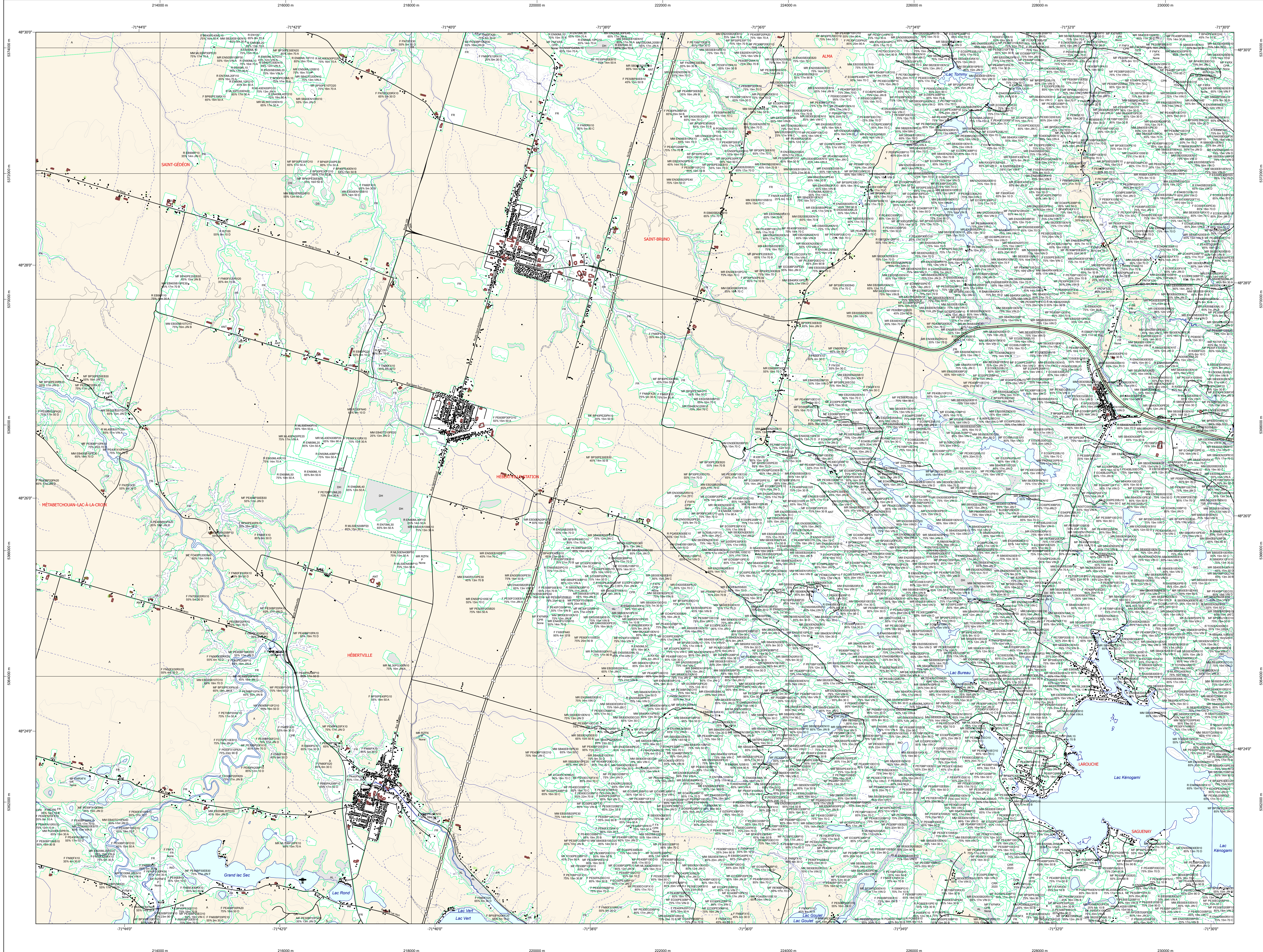
Table with 3 columns: CODE RÉSINEUSES, CODE FEUILLEUX, and CODE FEUILLEUX. It lists various tree species and their codes.

Table titled 'CLASSES D'ÂGE' showing age classes for young and old forests, and a table for 'Étage' (strata) with 'Inférieur (INF)' and 'Supérieur (SUP)'.

Large table with two main columns: 'CODE PERTURBATIONS D'ORIGINE' and 'CODE INTERVENTIONS PARTIELLES'. It lists various codes for forest disturbances and management interventions.

Table with 2 columns: 'TERRAINS FORESTIERS IMPRODUCTIFS' and 'CLASSES DE PENTE'. It lists codes for unproductive forest lands and slope classes.

Table with 2 columns: 'CODE NON FORESTIER' and 'CODE NON FORESTIER'. It lists codes for non-forest areas and their types.



SÉRIE PEUPLLEMENTS ÉCOFORESTIERS 1/20 000

Legend for the map, including 'Voies de communication et ponts', 'Obstacles et infrastructures', 'Courbe de niveau', 'Peuplement écoforestier', 'Matadonnées', 'Sources', 'Informations forestières', 'Réalisation', and 'AVERTISSEMENT'.