

Carte écoforestière

STRATIFICATION ÉCOFORESTIÈRE

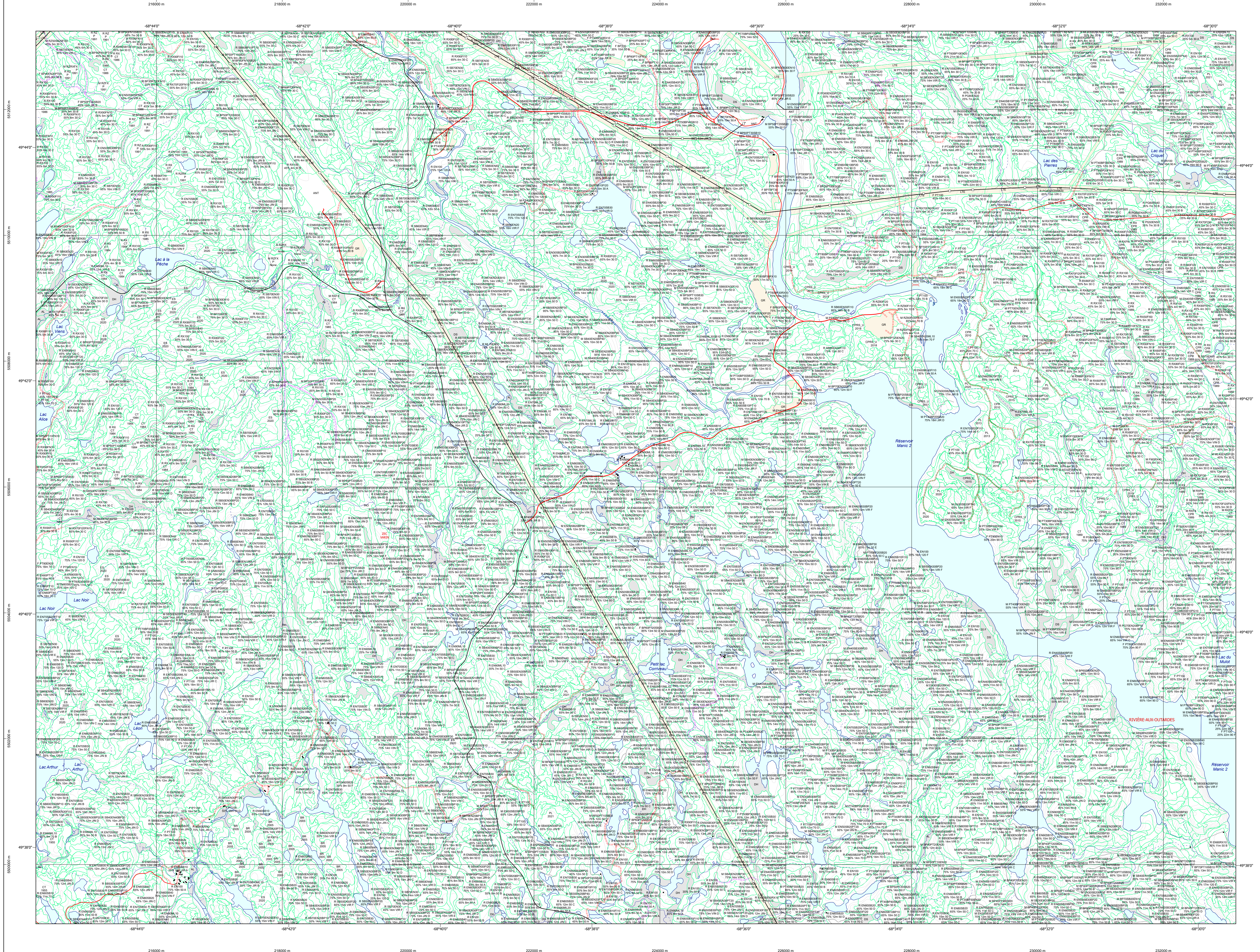


Table with 5 columns: Code, Description, +7m, -7m, Improductif, Non forestier. It lists various codes and their corresponding descriptions for forest types and management zones.

Table titled 'Exemple d'appellation' showing the breakdown of a specific forest type (F#030030A10) into its constituent parts based on different criteria.

TYPES DE COUVERT ET ESSENCES: RESINEUX, MIXTE À DOMINANCE RESINEUSE, MIXTE SANS DOMINANCE, MIXTE À DOMINANCE FEUILLEUSE, FEUILLE. Descriptions of the characteristics of these forest types.

Table with 3 columns: CODE RESINEUSES, CODE FEUILLEUX, CODE FEUILLEUX. Lists various tree species and their corresponding codes for classification.

Table with 3 columns: FEUILLEMENTS/ESSENCES, CLASSES D'ÂGE, and Étagement. Details age classes and vertical structure of the forest.

Table with 2 columns: CODE PERTURBATIONS D'ORIGINE and CODE INTERVENTIONS PARTIELLES. Lists various types of forest disturbances and partial interventions.

Table with 2 columns: TERRAINS FORESTIERS IMPRODUCTIFS and CLASSES DE PENTE. Lists unproductive forest lands and slope classes.

Table with 2 columns: CODE NON FORESTIER and CODE NON FORESTIER. Lists non-forested areas.

22F10NE
(22F10-200-020)

Legend for the map, detailing symbols and colors for communication routes, obstacles, contour lines, forest types, and management boundaries.

Metadata and technical information, including sources, cartographic data, and production details.

Additional technical information, including realization details, diffusion, and a disclaimer.