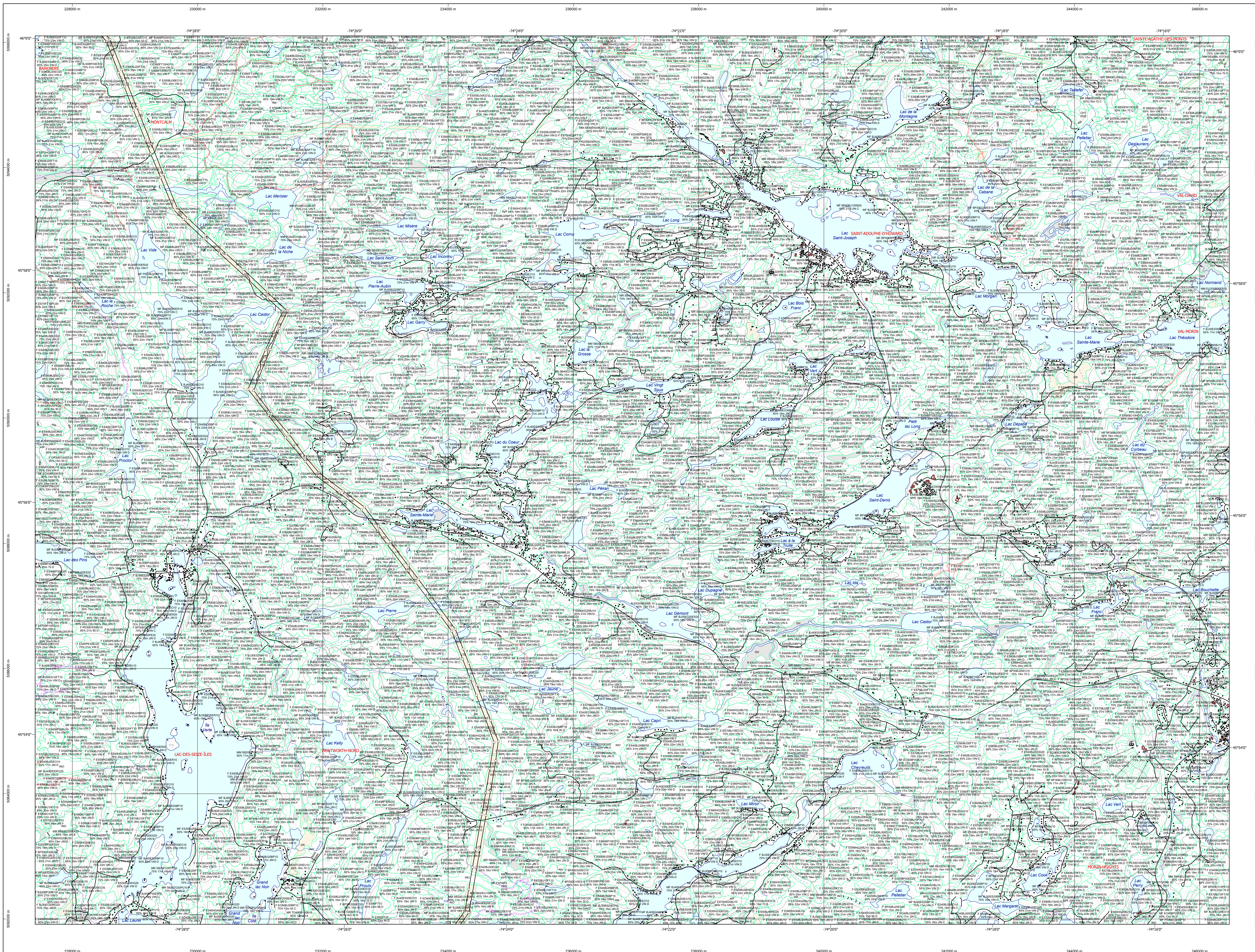


Carte écoforestière



STRATIFICATION ÉCOFORESTIÈRE

Table with columns: Code, Description, Type de couvert, +7m, -7m, Improductif, Non forestier. Includes rows for codes like #31G16NO, #12, #13, #14, #15, #16, #17, #18, #19, #20, #21, #22, #23, #24, #25, #26, #27, #28, #29, #30, #31, #32, #33, #34, #35, #36, #37, #38, #39, #40, #41, #42, #43, #44, #45, #46, #47, #48, #49, #50.

Table with columns: Exemple d'appellation, +7m de hauteur, -7m de hauteur, Interventions d'origine, Interventions partielles, Improductif, Non forestier. Includes row for #31G16NO.

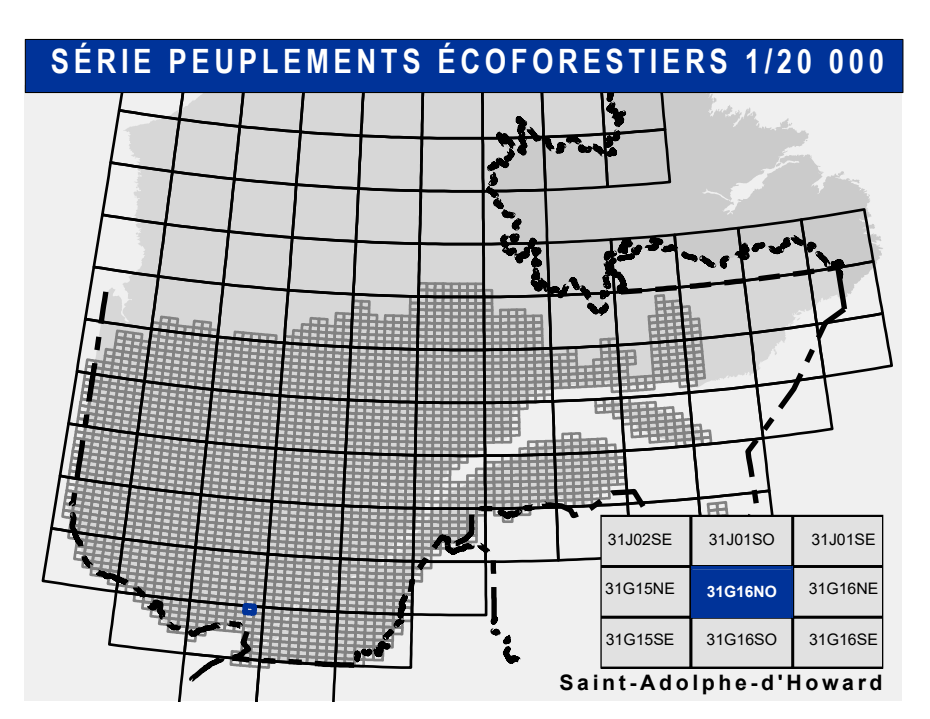
Table with columns: CODE RÉSINEUX, CODE FEUILLUS, CODE FEUILLUS. Lists various tree species codes and their descriptions.

Table with columns: PEULEMENTS ÉQUIVOCUES, PEULEMENTS MÉDIOCRUES, PEULEMENTS SUPÉRIEURS. Lists age class codes and their descriptions.

Table with columns: CODE PERTURBATIONS D'ORIGINE, CODE INTERVENTIONS PARTIELLES, CODE INTÉRIEURES MOYENNES, CODE INTÉRIEURES AVANCÉES. Lists disturbance and intervention codes and their descriptions.

Table with columns: CODE TERRAINS FORESTIERS IMPRODUCTIFS, CODE CLASSES DE PENTE. Lists terrain codes and slope class descriptions.

Table with columns: CODE NON FORESTIER, CODE NON FORESTIER. Lists non-forest codes and their descriptions.



Legend table with columns: Voies de communication et ponts, Obstacles et infrastructures, Courbe de niveau, Peuplement écoforestier, Métadonnées.

Table with columns: Sources, Informations forestières, Réalisation, Avertissement. Provides source information and project details.

Table with columns: Métadonnées, Sources, Informations forestières, Réalisation, Avertissement. Provides metadata and project details.

Project information block including title '31G16NO', date '14/04/2005', organization 'Ministère des Ressources naturelles et de la Faune', and other administrative details.