

STRATIFICATION ÉCOFORESTIÈRE

Table with 5 columns: Code, Type de description, > 1m, 1m, Improductif, Non forestier. Rows include codes like 03, 04, 05, 06, 07, 08, 09, 10, 11, 12, 13, 14, 15, 16, 17, 18, 19, 20, 21, 22, 23, 24, 25, 26, 27, 28, 29, 30, 31, 32, 33, 34, 35, 36, 37, 38, 39, 40, 41, 42, 43, 44, 45, 46, 47, 48, 49, 50, 51, 52, 53, 54, 55, 56, 57, 58, 59, 60, 61, 62, 63, 64, 65, 66, 67, 68, 69, 70, 71, 72, 73, 74, 75, 76, 77, 78, 79, 80, 81, 82, 83, 84, 85, 86, 87, 88, 89, 90, 91, 92, 93, 94, 95, 96, 97, 98, 99, 00.

Table with 4 columns: Exemple d'appellation, Type de hauteur, Improductif, Non forestier. Rows include codes like 03, 04, 05, 06, 07, 08, 09, 10, 11, 12, 13, 14, 15, 16, 17, 18, 19, 20, 21, 22, 23, 24, 25, 26, 27, 28, 29, 30, 31, 32, 33, 34, 35, 36, 37, 38, 39, 40, 41, 42, 43, 44, 45, 46, 47, 48, 49, 50, 51, 52, 53, 54, 55, 56, 57, 58, 59, 60, 61, 62, 63, 64, 65, 66, 67, 68, 69, 70, 71, 72, 73, 74, 75, 76, 77, 78, 79, 80, 81, 82, 83, 84, 85, 86, 87, 88, 89, 90, 91, 92, 93, 94, 95, 96, 97, 98, 99, 00.

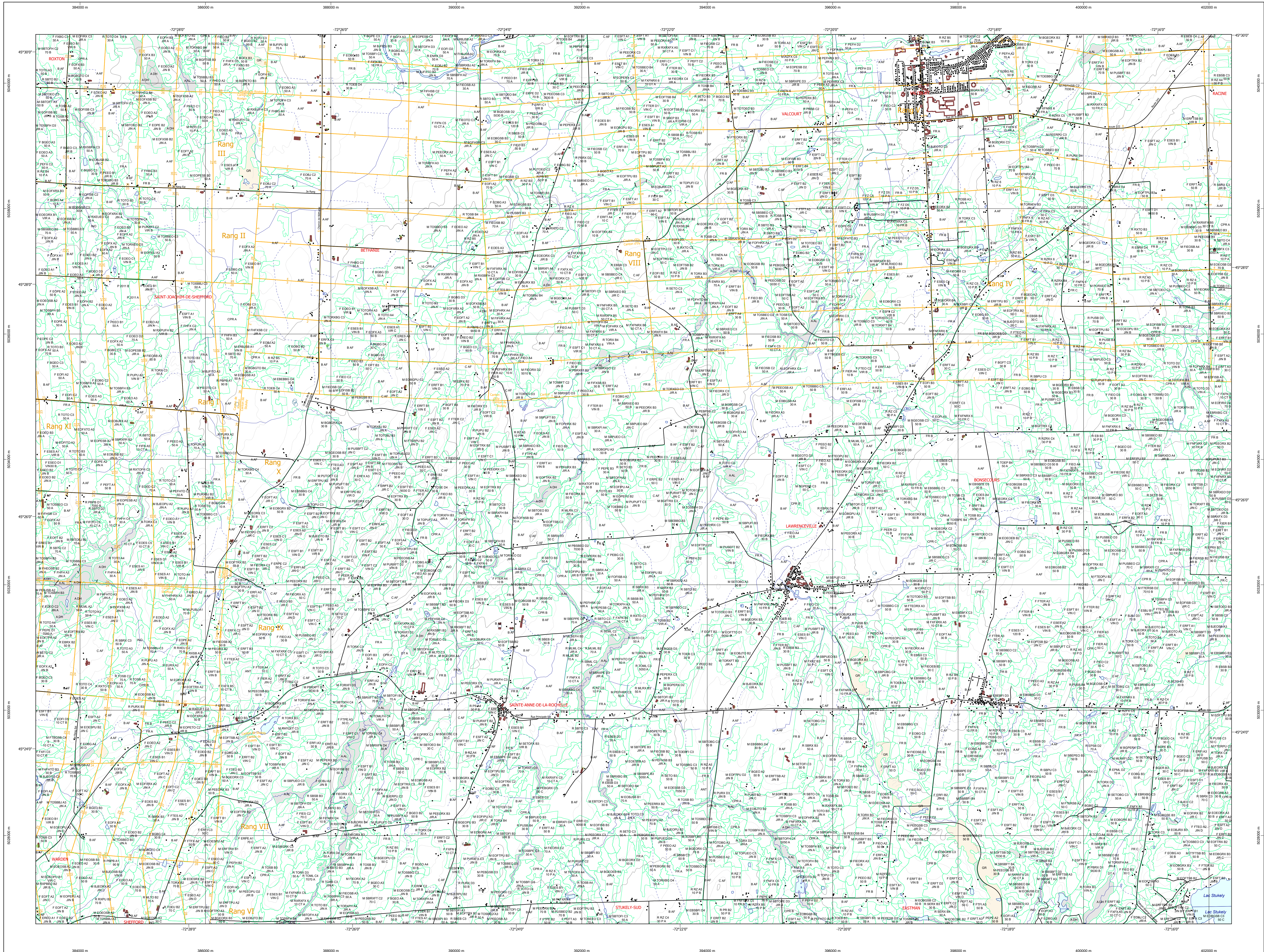
Table with 3 columns: CODE, ESSENCE RESERVEES #1, ESSENCE RESERVEES #2, ESSENCE RESERVEES #3, ESSENCE RESERVEES #4, ESSENCE RESERVEES #5, ESSENCE RESERVEES #6, ESSENCE RESERVEES #7, ESSENCE RESERVEES #8, ESSENCE RESERVEES #9, ESSENCE RESERVEES #10, ESSENCE RESERVEES #11, ESSENCE RESERVEES #12, ESSENCE RESERVEES #13, ESSENCE RESERVEES #14, ESSENCE RESERVEES #15, ESSENCE RESERVEES #16, ESSENCE RESERVEES #17, ESSENCE RESERVEES #18, ESSENCE RESERVEES #19, ESSENCE RESERVEES #20, ESSENCE RESERVEES #21, ESSENCE RESERVEES #22, ESSENCE RESERVEES #23, ESSENCE RESERVEES #24, ESSENCE RESERVEES #25, ESSENCE RESERVEES #26, ESSENCE RESERVEES #27, ESSENCE RESERVEES #28, ESSENCE RESERVEES #29, ESSENCE RESERVEES #30, ESSENCE RESERVEES #31, ESSENCE RESERVEES #32, ESSENCE RESERVEES #33, ESSENCE RESERVEES #34, ESSENCE RESERVEES #35, ESSENCE RESERVEES #36, ESSENCE RESERVEES #37, ESSENCE RESERVEES #38, ESSENCE RESERVEES #39, ESSENCE RESERVEES #40, ESSENCE RESERVEES #41, ESSENCE RESERVEES #42, ESSENCE RESERVEES #43, ESSENCE RESERVEES #44, ESSENCE RESERVEES #45, ESSENCE RESERVEES #46, ESSENCE RESERVEES #47, ESSENCE RESERVEES #48, ESSENCE RESERVEES #49, ESSENCE RESERVEES #50, ESSENCE RESERVEES #51, ESSENCE RESERVEES #52, ESSENCE RESERVEES #53, ESSENCE RESERVEES #54, ESSENCE RESERVEES #55, ESSENCE RESERVEES #56, ESSENCE RESERVEES #57, ESSENCE RESERVEES #58, ESSENCE RESERVEES #59, ESSENCE RESERVEES #60, ESSENCE RESERVEES #61, ESSENCE RESERVEES #62, ESSENCE RESERVEES #63, ESSENCE RESERVEES #64, ESSENCE RESERVEES #65, ESSENCE RESERVEES #66, ESSENCE RESERVEES #67, ESSENCE RESERVEES #68, ESSENCE RESERVEES #69, ESSENCE RESERVEES #70, ESSENCE RESERVEES #71, ESSENCE RESERVEES #72, ESSENCE RESERVEES #73, ESSENCE RESERVEES #74, ESSENCE RESERVEES #75, ESSENCE RESERVEES #76, ESSENCE RESERVEES #77, ESSENCE RESERVEES #78, ESSENCE RESERVEES #79, ESSENCE RESERVEES #80, ESSENCE RESERVEES #81, ESSENCE RESERVEES #82, ESSENCE RESERVEES #83, ESSENCE RESERVEES #84, ESSENCE RESERVEES #85, ESSENCE RESERVEES #86, ESSENCE RESERVEES #87, ESSENCE RESERVEES #88, ESSENCE RESERVEES #89, ESSENCE RESERVEES #90, ESSENCE RESERVEES #91, ESSENCE RESERVEES #92, ESSENCE RESERVEES #93, ESSENCE RESERVEES #94, ESSENCE RESERVEES #95, ESSENCE RESERVEES #96, ESSENCE RESERVEES #97, ESSENCE RESERVEES #98, ESSENCE RESERVEES #99, ESSENCE RESERVEES #00.

Table with 2 columns: CODE, HAUTEUR MOYENNE DES TIGES DOMINANTES ET COORDONNÉES. Rows include codes like 03, 04, 05, 06, 07, 08, 09, 10, 11, 12, 13, 14, 15, 16, 17, 18, 19, 20, 21, 22, 23, 24, 25, 26, 27, 28, 29, 30, 31, 32, 33, 34, 35, 36, 37, 38, 39, 40, 41, 42, 43, 44, 45, 46, 47, 48, 49, 50, 51, 52, 53, 54, 55, 56, 57, 58, 59, 60, 61, 62, 63, 64, 65, 66, 67, 68, 69, 70, 71, 72, 73, 74, 75, 76, 77, 78, 79, 80, 81, 82, 83, 84, 85, 86, 87, 88, 89, 90, 91, 92, 93, 94, 95, 96, 97, 98, 99, 00.

Table with 2 columns: CLASSES D'ÂGE, REPLEVEMENTS ÉTAGÉS. Rows include codes like 03, 04, 05, 06, 07, 08, 09, 10, 11, 12, 13, 14, 15, 16, 17, 18, 19, 20, 21, 22, 23, 24, 25, 26, 27, 28, 29, 30, 31, 32, 33, 34, 35, 36, 37, 38, 39, 40, 41, 42, 43, 44, 45, 46, 47, 48, 49, 50, 51, 52, 53, 54, 55, 56, 57, 58, 59, 60, 61, 62, 63, 64, 65, 66, 67, 68, 69, 70, 71, 72, 73, 74, 75, 76, 77, 78, 79, 80, 81, 82, 83, 84, 85, 86, 87, 88, 89, 90, 91, 92, 93, 94, 95, 96, 97, 98, 99, 00.

Table with 2 columns: CODE, PERTURBATIONS D'ORIGINE, INTERVENTIONS PARTIELLES, INTERVENTIONS D'ORIGINE. Rows include codes like 03, 04, 05, 06, 07, 08, 09, 10, 11, 12, 13, 14, 15, 16, 17, 18, 19, 20, 21, 22, 23, 24, 25, 26, 27, 28, 29, 30, 31, 32, 33, 34, 35, 36, 37, 38, 39, 40, 41, 42, 43, 44, 45, 46, 47, 48, 49, 50, 51, 52, 53, 54, 55, 56, 57, 58, 59, 60, 61, 62, 63, 64, 65, 66, 67, 68, 69, 70, 71, 72, 73, 74, 75, 76, 77, 78, 79, 80, 81, 82, 83, 84, 85, 86, 87, 88, 89, 90, 91, 92, 93, 94, 95, 96, 97, 98, 99, 00.

Table with 2 columns: CODE, TERRAINS FORESTIERS, CLASSES DE PENTE. Rows include codes like 03, 04, 05, 06, 07, 08, 09, 10, 11, 12, 13, 14, 15, 16, 17, 18, 19, 20, 21, 22, 23, 24, 25, 26, 27, 28, 29, 30, 31, 32, 33, 34, 35, 36, 37, 38, 39, 40, 41, 42, 43, 44, 45, 46, 47, 48, 49, 50, 51, 52, 53, 54, 55, 56, 57, 58, 59, 60, 61, 62, 63, 64, 65, 66, 67, 68, 69, 70, 71, 72, 73, 74, 75, 76, 77, 78, 79, 80, 81, 82, 83, 84, 85, 86, 87, 88, 89, 90, 91, 92, 93, 94, 95, 96, 97, 98, 99, 00.



Legend section containing: Voies de communication et ponts, Obstacles et infrastructures, Courbe de niveau, Peuplement écoforestier, Métadonnées, Sources, Informations forestières, Réalisation, Avertissement, and Terrains forestiers.

Metadata section containing: Sources, Informations forestières, Réalisation, Avertissement, and Terrains forestiers.

Table with 2 columns: CODE, TERRAINS FORESTIERS, CLASSES DE PENTE. Rows include codes like 03, 04, 05, 06, 07, 08, 09, 10, 11, 12, 13, 14, 15, 16, 17, 18, 19, 20, 21, 22, 23, 24, 25, 26, 27, 28, 29, 30, 31, 32, 33, 34, 35, 36, 37, 38, 39, 40, 41, 42, 43, 44, 45, 46, 47, 48, 49, 50, 51, 52, 53, 54, 55, 56, 57, 58, 59, 60, 61, 62, 63, 64, 65, 66, 67, 68, 69, 70, 71, 72, 73, 74, 75, 76, 77, 78, 79, 80, 81, 82, 83, 84, 85, 86, 87, 88, 89, 90, 91, 92, 93, 94, 95, 96, 97, 98, 99, 00.