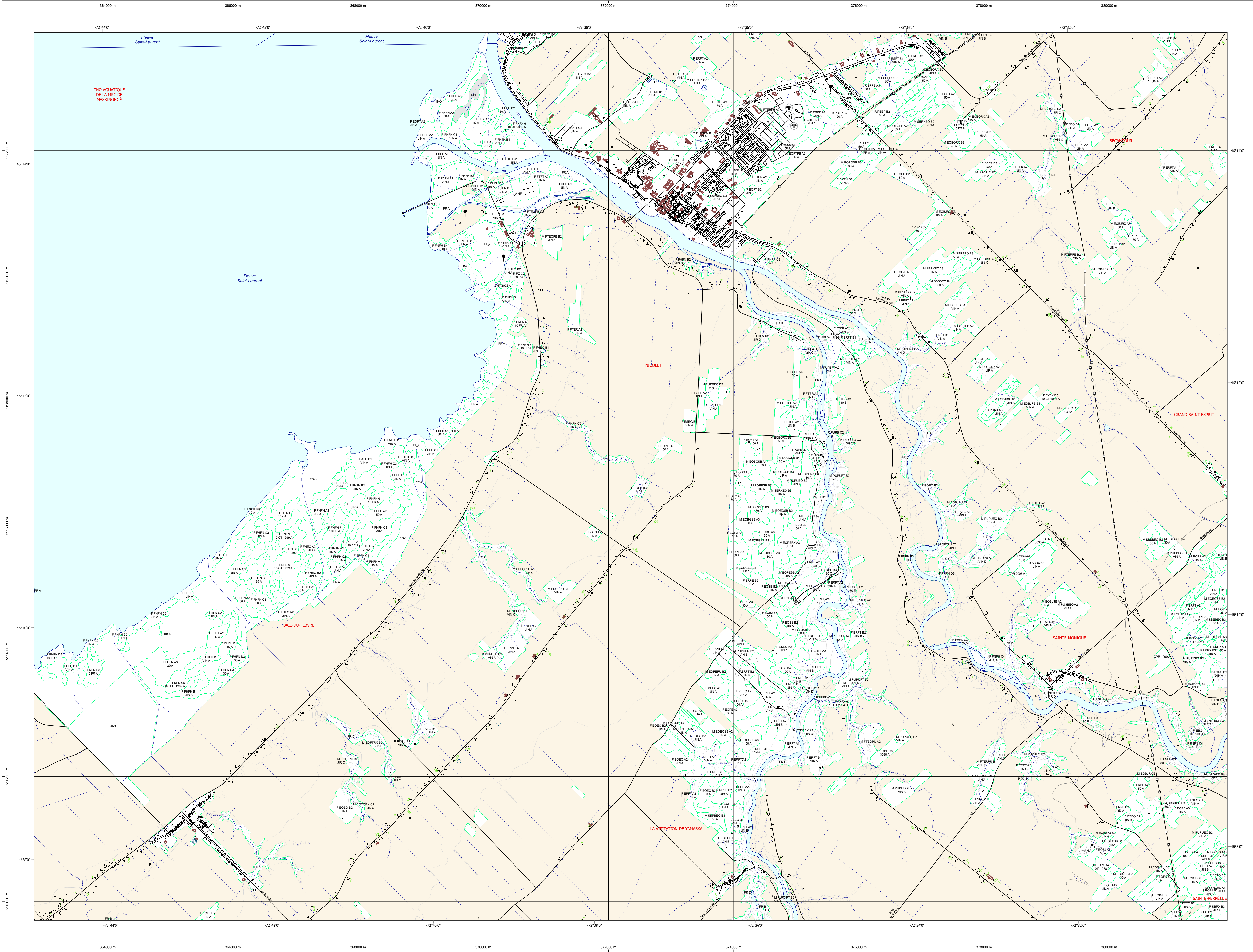


Carte écoforestière



31102NE
(31102-200-0202)

STRATIFICATION ECOFORESTIERE

Table with columns: Code, Type de couvert, Hauteur, Hauteur, Productivité, Non forestier. Lists various forest cover types and their characteristics.

Table titled 'Exemple d'appellation' showing forest codes and their corresponding descriptions for different types of forests.

TYPES DE COUVERT ET ESSENCES SELON LE PROGRAMME D'INVENTAIRE

Table detailing forest cover types and species codes, including 'ESSENCES RENOUVELER' and 'ESSENCES PEUILLES' with their respective descriptions.

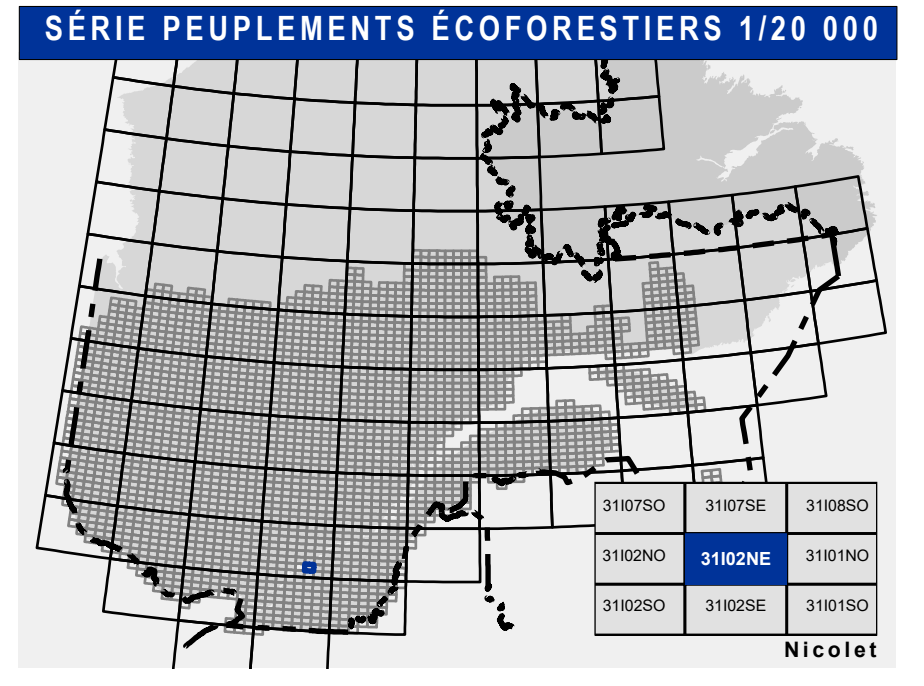
Table titled 'INDICES DENSITE-HAUTEUR' showing density and height indices for forest plots, categorized by number of trees and volume.

Table titled 'CLASSES D'AGE' showing age classes for forest stands, including metrics like volume and area.

Table titled 'PERTURBATIONS D'ORIGINE' and 'INTERVENTIONS D'ORIGINE' listing various types of disturbances and management interventions.

Table titled 'TERRAINS FORESTIERS IMPRODUCTIFS' and 'CLASSES DE PENTE' listing non-productive forest lands and slope classes.

Table titled 'CODE NON FORESTIER' listing non-forest codes and their descriptions.



Legend for the map, including communication routes, hydrography, forest inventory symbols, and other geographical features.

Legend for the map, including contour lines, forest types, and other geographical features.

Legend for the map, including cadastral information, coordinates, and other technical details.

Legend for the map, including sources, production, and other technical details.