

Carte écoforestière

STRATIFICATION ÉCOFORESTIÈRE

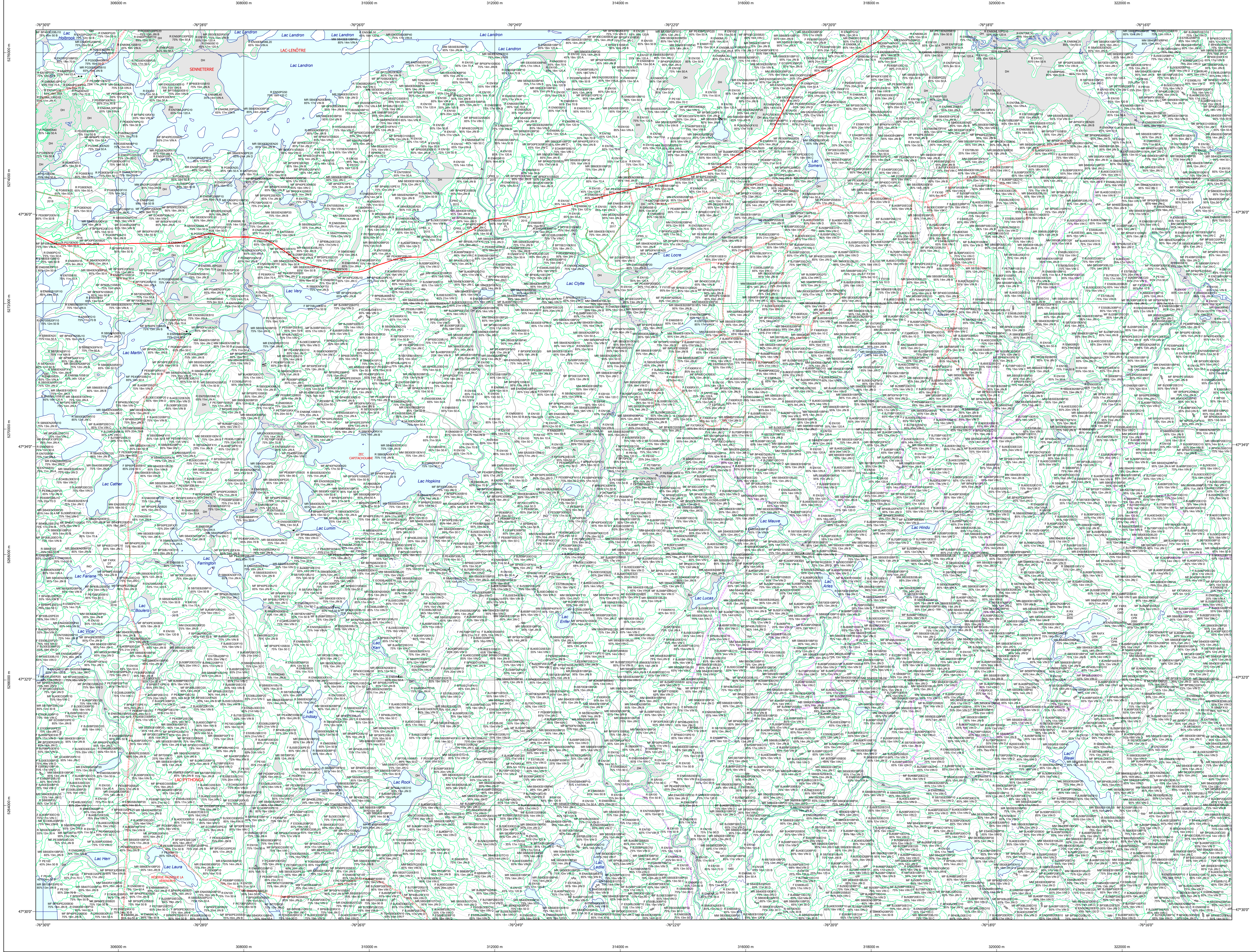


Table with 5 columns: Code, Description, +7m, -7m, Improductif, Non Forestier. It lists various forest codes and their corresponding characteristics.

Table titled 'Exemple d'appellation' showing a breakdown of forest codes based on height and intervention criteria.

TYPES DE COUVERT ET ESSENCES
Les résineux constituent 75% de plus de la surface terrière du peuplement.
MIXTE À DOMINANCE RÉSINEUSE
Les résineux constituent de 55% à 74% de la surface terrière du peuplement.

Table with 3 columns: CODE RÉSINEUSES, CODE FEUILLEUSES, CODE FEUILLEUSES. It lists specific tree species and their codes.

Table with 2 columns: PEULEMENTS ÉCOFORESTIÈRES, CLASSES D'ÂGE. It defines age classes for different forest types based on tree diameter.

Table with 2 columns: CODE PERTURBATIONS D'ORIGINE, CODE INTERVENTIONS PARTIELLES. It lists various types of forest disturbances and the corresponding management interventions.

Table with 2 columns: CODE TERRAINS FORESTIERS IMPRODUCTIFS, CLASSES DE PENTE. It categorizes unproductive forest lands and slope classes.

Table with 2 columns: CODE NON FORESTIER, CODE NON FORESTIER. It lists various non-forest land uses and their codes.

SÉRIE PEULEMENTS ÉCOFORESTIERS 1/20 000

Legend for the map showing symbols for communication routes, obstacles, contour lines, forest types, and other features.

Legend for map features including sources, information, realization, and diffusion details.

Legend for map features including sources, information, realization, and diffusion details.

Legend for map features including sources, information, realization, and diffusion details.

Legend for map features including sources, information, realization, and diffusion details.