

Carte écoforestière

STRATIFICATION ÉCOFORESTIÈRE

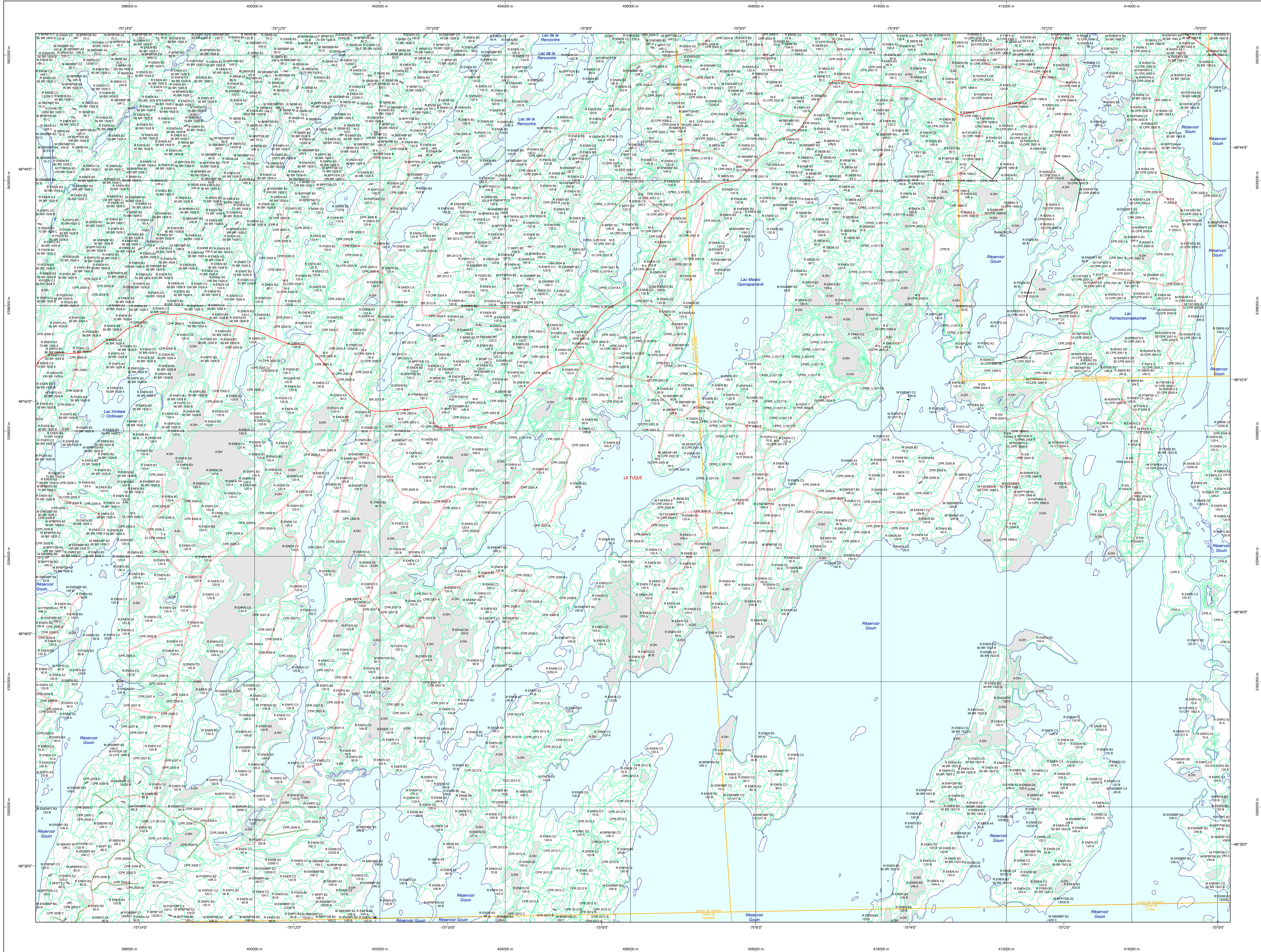


Table with columns: Paramètres utilisés pour la cartographie, Type de couvert, Type de hauteur, Productivité, Non forestier. Includes rows for various forest types like 'Coteau de montagne', 'Tanneau', etc.

Table with columns: Exemple d'appellation, Type de hauteur, Productivité, Non forestier. Shows an example of a forest parcel name and its corresponding height, productivity, and non-forest status.

TYPES DE COUVERT ET ESSENCES SELON LE PROGRAMME D'INVENTAIRE. Section describing the types of cover and tree species according to the inventory program.

RELEVÉS. Section detailing the data collection methods and survey parameters used for the forest inventory.

Table mapping codes to tree species names, such as 'EP' for 'Épicéa de la Nouvelle-France' and 'MC' for 'Mélèze d'Europe'.

Table mapping codes to forest types, such as 'A' for 'Forêt à feuilles caduques' and 'B' for 'Forêt à conifères'.

Footnote information regarding the map's production and data sources.

Table titled 'INDICES DENSITÉ-HAUTEUR' showing statistical data for different forest types, including average height and density.

Table titled 'CLASSES D'ÂGE' showing age class distribution for different forest types.

Table titled 'CLASSES D'ÂGE' showing age class distribution for different forest types.

Table titled 'CLASSES D'ÂGE' showing age class distribution for different forest types.

Table with columns: CODE, PERTURBATIONS D'ORIGINE, INTERVENTIONS PARTIELLES. Lists various types of disturbances and partial interventions.

Table with columns: CODE, PERTURBATIONS D'ORIGINE, INTERVENTIONS PARTIELLES. Lists various types of disturbances and partial interventions.

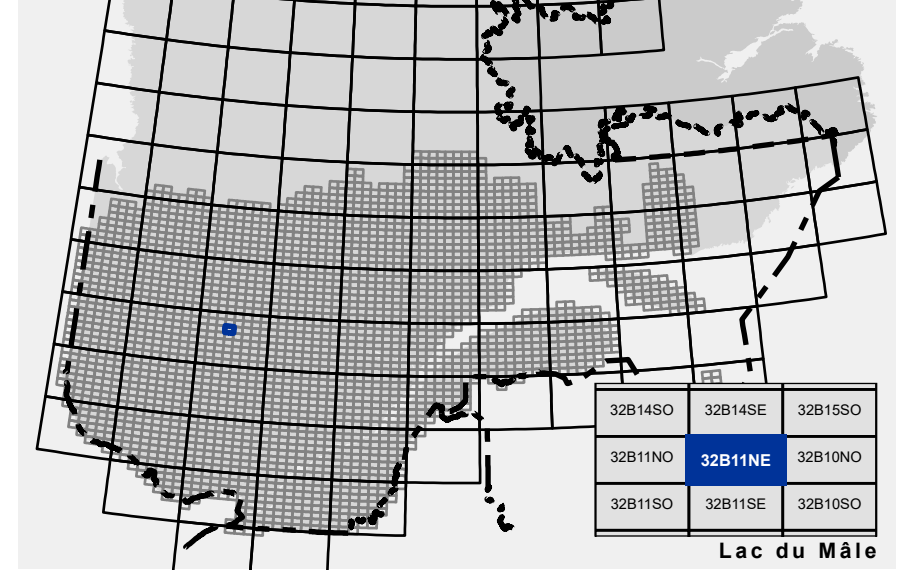
Table with columns: CODE, PERTURBATIONS D'ORIGINE, INTERVENTIONS PARTIELLES. Lists various types of disturbances and partial interventions.

Table with columns: CODE, PERTURBATIONS D'ORIGINE, INTERVENTIONS PARTIELLES. Lists various types of disturbances and partial interventions.

Table with columns: CODE, TERRAINS FORESTIERS, CLASSES DE PENTE. Lists forest terrain types and slope classes.

Table with columns: CODE, TERRAINS FORESTIERS, CLASSES DE PENTE. Lists forest terrain types and slope classes.

SERIE PEUPLLEMENTS ÉCOFORESTIERS 1/20 000



Legend for map symbols, including 'Voies de communication et ponts', 'Obstacles et infrastructures', 'Courbe de niveau', 'Peuplement écoforestier', and 'Métadonnées'.

Legend for map symbols, including 'Courbe de niveau', 'Peuplement écoforestier', and 'Métadonnées'.

Métadonnées. Technical details about the map, including coordinate system, datum, projection, and scale.

Sources. Information about the data sources used for the map's production.

Information forestières. Summary of forest inventory statistics and program details.

Production. Details about the map's production and the organizations involved.

AVERTISSEMENT. Disclaimer regarding the map's use and the responsibility of the Government of Quebec.