

Carte écoforestière

STRATIFICATION ÉCOFORESTIÈRE

Table with 4 columns: Code, Type de description, Indicateur, Non forestier. Lists various codes for different types of forest strata.

Table titled 'Exemple d'appellation' showing the structure of a stratum name with 'Type de hauteur', 'Indicateur', and 'Non forestier' components.

Table titled 'TYPES DE COUVERT ET ESSENCES SELON LE PROGRAMME D'INVENTAIRE' listing various tree species and their corresponding codes.

Text explaining the methodology for determining tree species, including the 'MELANGES' section.

Table with columns for 'ESSENCES RENSEIGNÉES', 'ESSENCES FEUILLEUSES', and 'ESSENCES PÉRIOLÉES'. Lists tree species codes and names.

Footnote explaining the sources of species data: (1) Centre Canadien d'Arbre-Plante, (2) Centre Canadien d'Arbre-Plante, (3) Centre Canadien d'Arbre-Plante.

Table titled 'INDICES DENSITÉ-HAUTEUR' showing mean height and density values for different forest types.

Footnote for the density-height indices table: (1) Information provenant d'inventaire satellite.

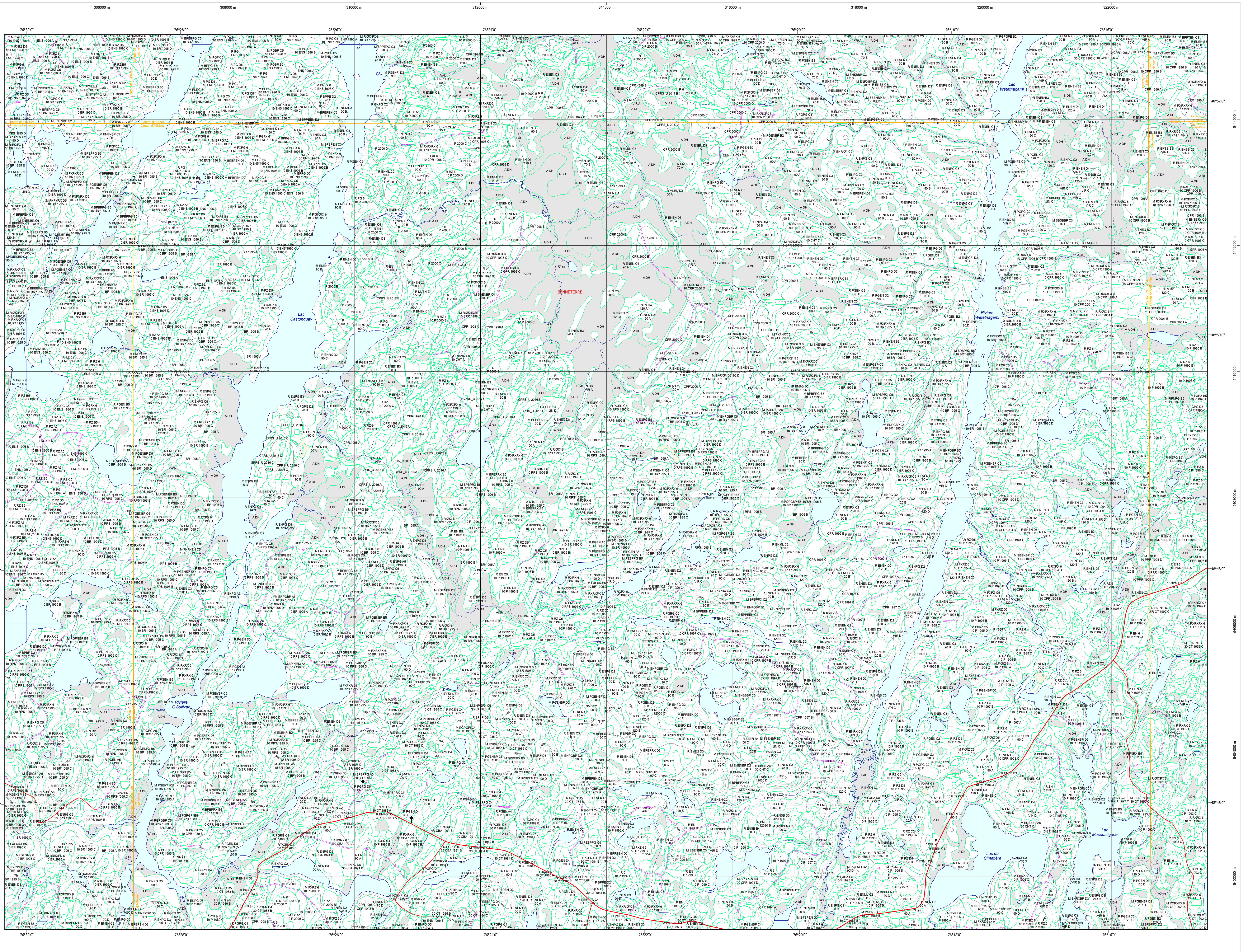
Table titled 'CLASSES D'ÂGE' showing age class distributions for different forest types.

Table titled 'PEUPLIEMENTS ÉTAGÉS' showing the distribution of different tree species across various forest types.

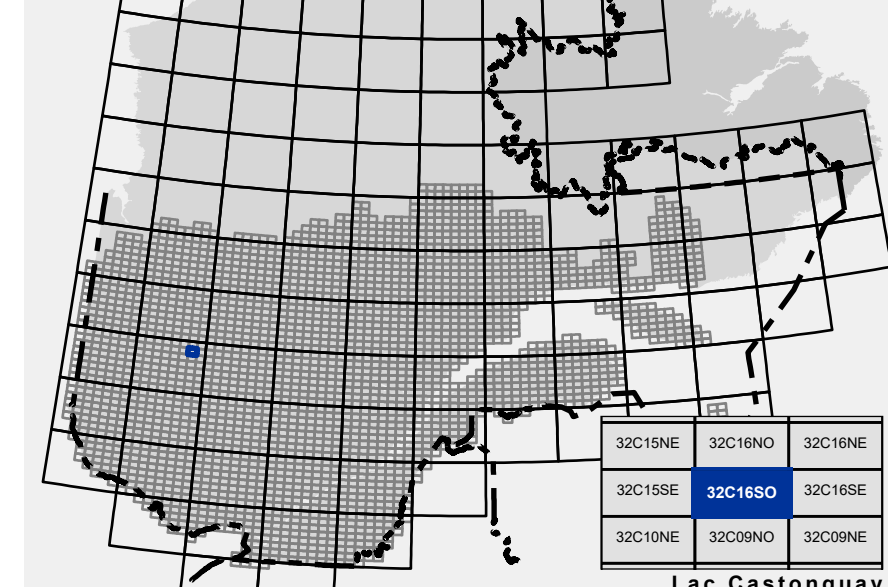
Table titled 'PERTURBATIONS D'ORIGINE' and 'INTERVENTIONS PARTICULIÈRES' listing various types of forest disturbances and management interventions.

Table titled 'PERTURBATIONS MOYENNES' listing common types of forest disturbances.

Table titled 'TERRAINS FORESTIERS' and 'CLASSES DE PENTE' listing forest types and slope classifications.



SÉRIE PEUPLIEMENTS ÉCOFORESTIERS 1/20 000



Legend for the map showing symbols and colors for communication roads, hydrography, obstacles, and forest types.

Legend for map features including contour lines, forest strata, and metadonnées.

Legend for metadonnées (metadata) including geographical coordinates and projection information.

Legend for sources, forest information, and realization details.

Legend for slope classes and other technical details.