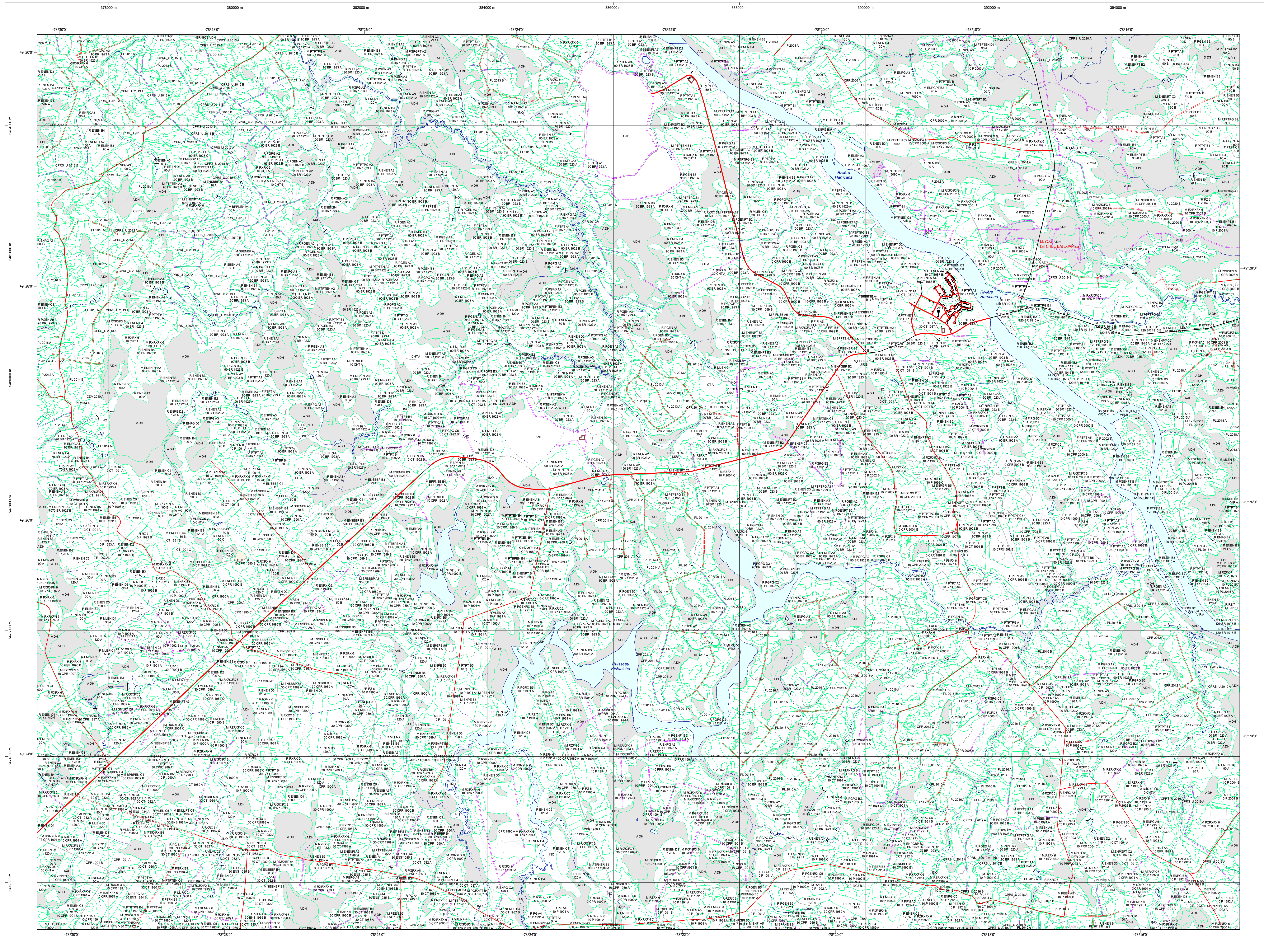


Carte écoforestière

STRATIFICATION ÉCOFORESTIÈRE

Table with columns: Code, Type de description, Fm, Tm, Improductif, Non forestier. Includes rows for various forest types and codes like 32E08NO.



Types de couvert et espèces selon le programme d'inventaire
Région: Récolte de données sur la surface totale occupée par les espèces résineuses
Région: Récolte de données sur la surface totale occupée par les espèces feuillues

Table with columns: CODE, ESPECES RESINEUSES, ESPECES FEUILLEUSES. Lists species codes and their descriptions.

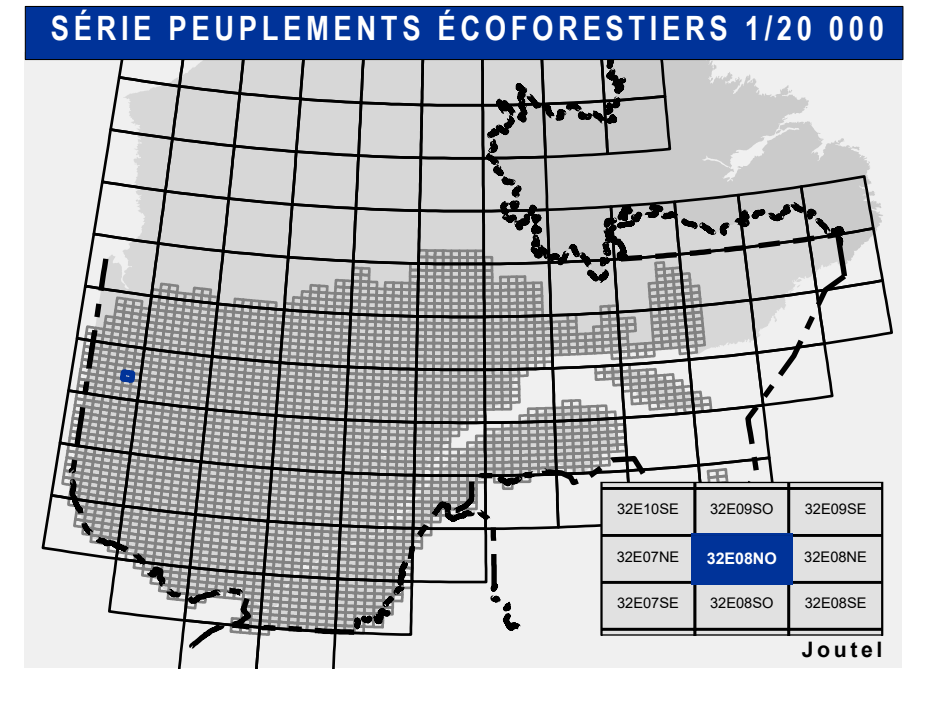
Table with columns: Classes de hauteur, Indices densité-hauteur. Shows height classes and density indices.

Table with columns: REPLEMENTS ETAGES, Classes d'âge. Shows age classes and their corresponding height classes.

Table with columns: CODE, PERTURBATIONS D'ORIGINE, INTERVENTIONS PARTIELLES. Lists types of disturbances and partial interventions.

Table with columns: CODE, TERRAINS FORESTIERS IMPRODUCTIFS, CLASSES DE PENTE. Lists unproductive forest types and slope classes.

Table with columns: CODE, NON FORESTIER. Lists non-forest types.



- Series of symbols and lines for communication roads, hydrography, communication roads, and other features.

- Series of symbols for various types of forest cover, including improductive and non-forest areas.

- Series of symbols for contour lines, matadonnées, and other geographical features.

- Series of symbols for various types of forest management and interventions.

- Series of symbols for terrain types and slope classes.

- Series of symbols for non-forest types and other specific categories.

Donnée, Sources, Informations forestières, Réalisation, AVERTISSEMENT. Textual information including data source, forest inventory details, production info, and a disclaimer.