

Carte écoforestière

STRATIFICATION ÉCOFORESTIÈRE

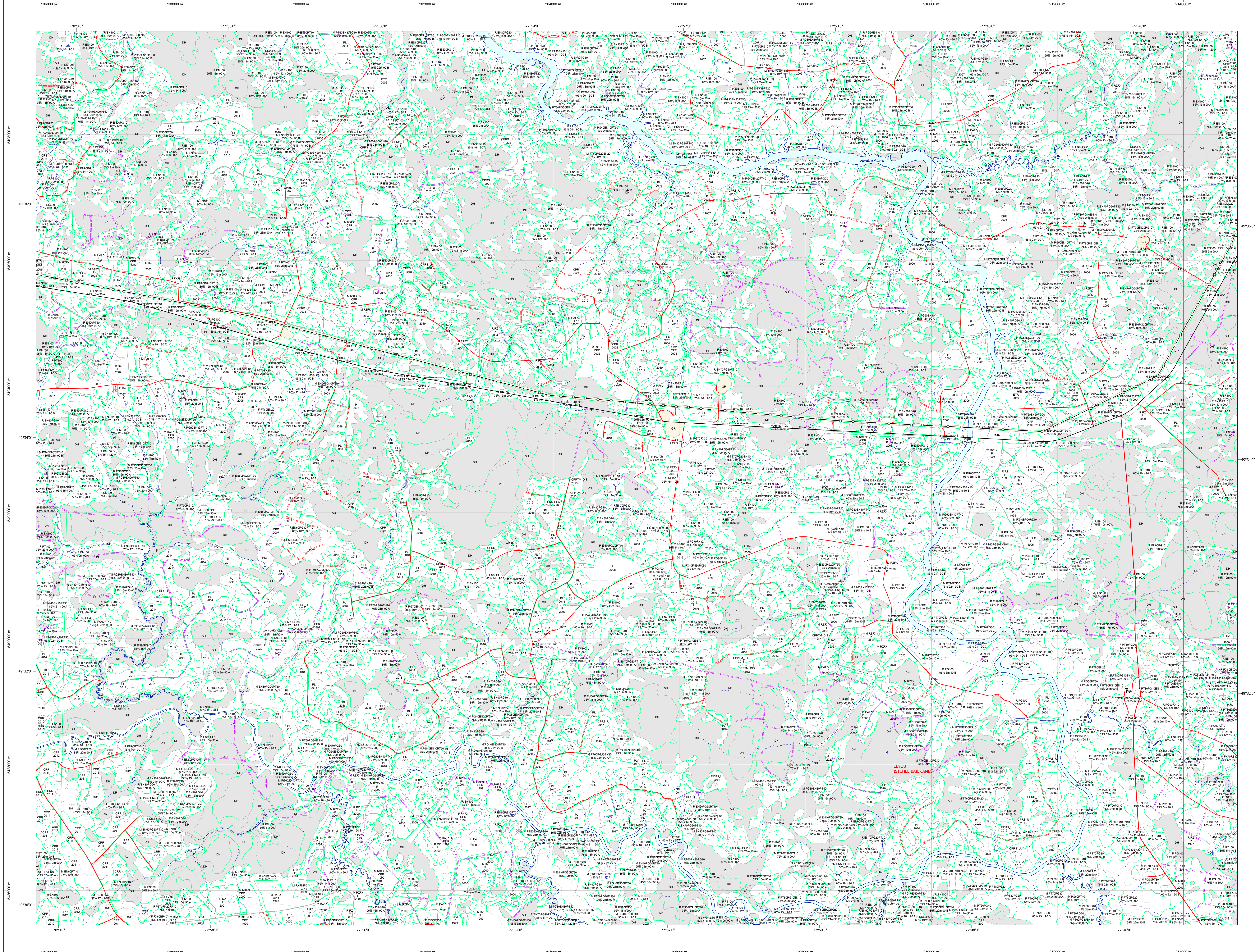


Table with 5 columns: Code, Description, +7m, -7m, Improductif, Non Forestier. It lists various forest types and their characteristics.

Table titled 'Exemple d'appellation' showing a sample forest name and its corresponding codes for height, intervention, and other factors.

TYPES DE COUVERT ET ESSENCES. Les résineux constituent 75% ou plus de la surface terrière du peuplement. MIXTE À DOMINANCE RÉSINEUSE. Les résineux constituent de 55% à 74% de la surface terrière du peuplement. MIXTE SANS DOMINANCE. Les résineux constituent de 45% à 54% de la surface terrière du peuplement. MIXTE À DOMINANCE FEUILLEUSE. Les résineux constituent de 25% à 44% de la surface terrière du peuplement. FEUILLEUX. Les résineux constituent moins de 25% de la surface terrière du peuplement.

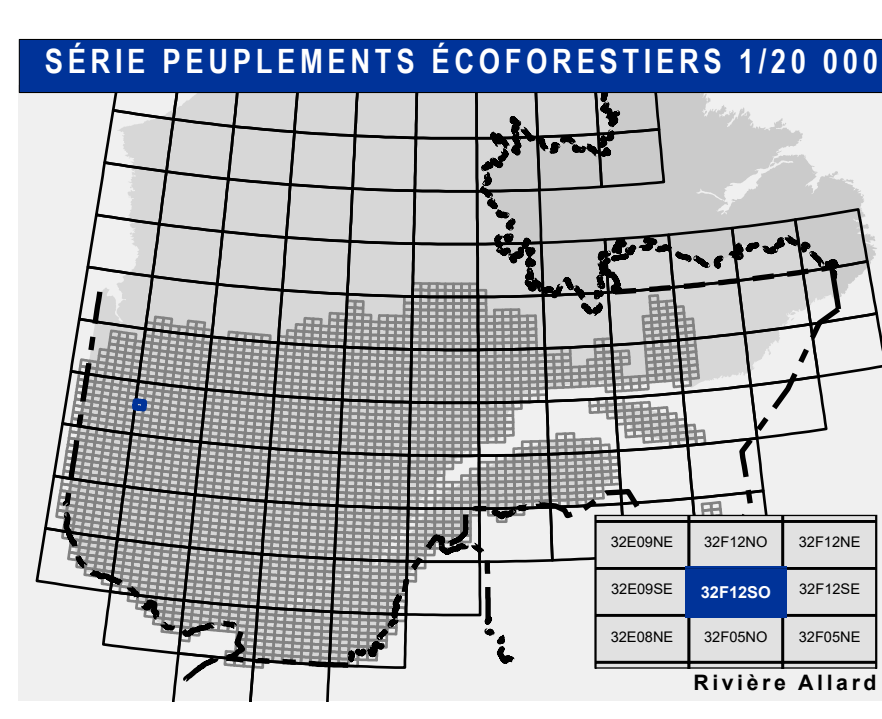
Table with 3 columns: CODE RÉSINEUSES, CODE FEUILLEUSES, CODE FEUILLEUSES. Lists various tree species and their codes.

Table with 2 columns: PEULEMENTS ÉQUIVALENTS, PEULEMENTS INÉQUIVALENTS. Lists different types of forest stands based on age and structure.

Table with 2 columns: CODE PERTURBATIONS D'ORIGINE, CODE INTERVENTIONS PARTIELLES. Lists various types of forest disturbances and partial interventions.

Table with 2 columns: TERRAINS FORESTIERS IMPRODUCTIFS, CLASSES DE PENTE. Lists types of non-productive forest lands and slope classes.

Table with 2 columns: CODE NON FORESTIER, CODE NON FORESTIER. Lists non-forested areas and their codes.



Legend for communication and bridges, including road types, trails, and other infrastructure.

Legend for obstacles and infrastructure, including buildings, dams, ski centers, and other structures.

Legend for contour lines, including contour lines, intermediaire contour lines, and other elevation markers.

Legend for forest types, including ecoforests, non-productive forests, and other forest classifications.

Legend for cadastral information, including cadastral reference systems, coordinates, and other survey data.

Legend for sources, including data sources, forest inventories, and other information sources.

Legend for non-forest areas, including agricultural areas, roads, and other non-forested land uses.

Legend for slope classes, including slope categories and their corresponding codes.