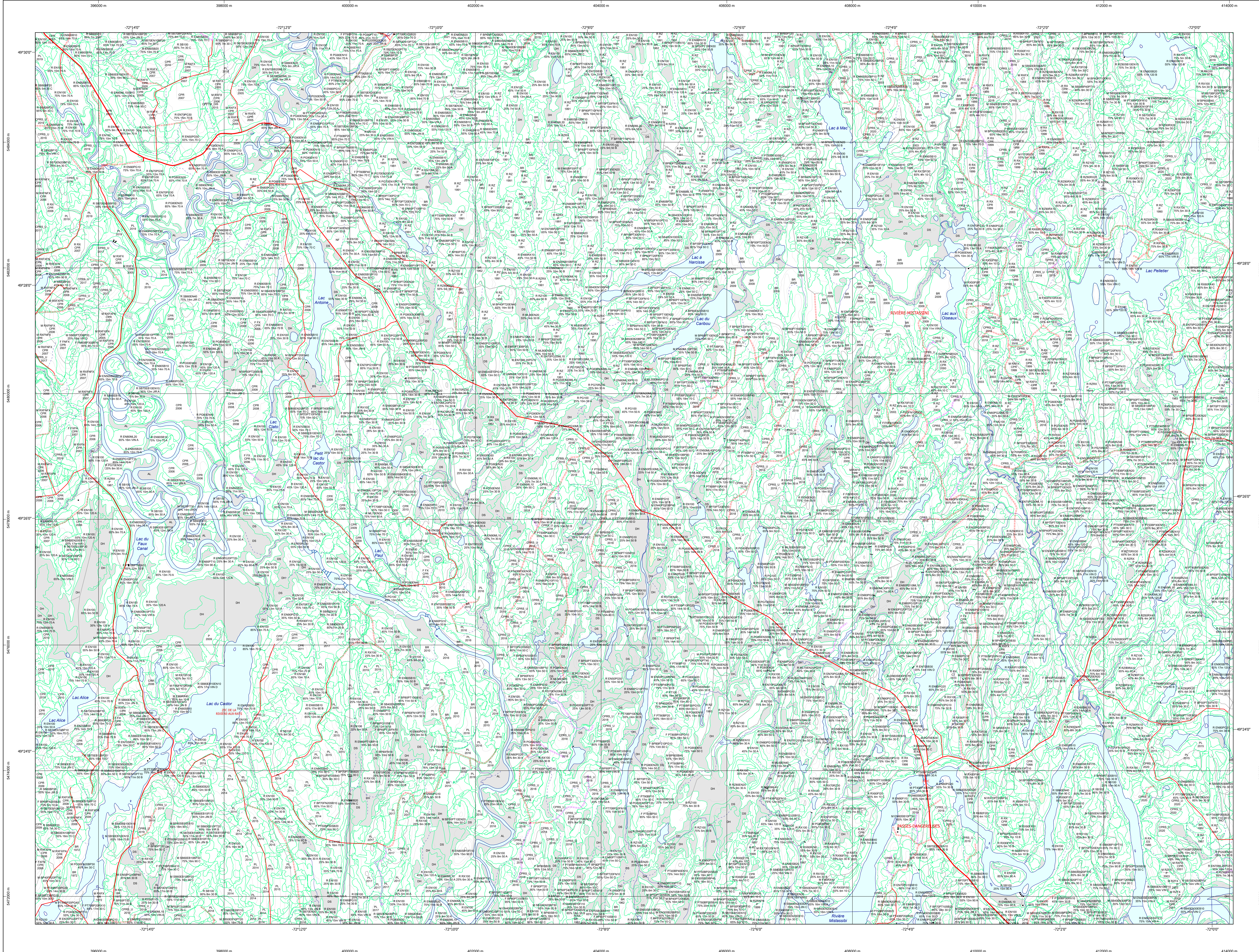


Carte écoforestière

STRATIFICATION ÉCOFORESTIÈRE



Paramètres utilisés pour la cartographie

| Code | Description | +7m | -7m | Improductif | Non Forestier |
|------|---------------------|-----|-----|-------------|---------------|
| F | Essence de feuillus | X | X | X | X |
| R | Essence de résineux | X | X | X | X |
| M | Mixte | X | X | X | X |
| U | Improductif | X | X | X | X |
| N | Non forestier | X | X | X | X |

Exemple d'appellation

| Code | Description | Intervention | Intervention | Intervention | Intervention | Intervention |
|------|---------------------|--------------|--------------|--------------|--------------|--------------|
| F | Essence de feuillus | R | R | R | R | R |
| M | Mixte | M | M | M | M | M |
| U | Improductif | U | U | U | U | U |
| N | Non forestier | N | N | N | N | N |

TYPES DE COUVERT ET ESSENCES
 Les résineux constituent 75% à plus de la surface terrière du peuplement.
MIXTE À DOMINANCE RÉSINEUSE
 Les résineux constituent de 55% à 74% de la surface terrière du peuplement.
MIXTE SANS DOMINANCE
 Les résineux constituent de 45% à 54% de la surface terrière du peuplement.
MIXTE À DOMINANCE FEUILLEUSE
 Les feuillus constituent de 25% à 44% de la surface terrière du peuplement.
FEUILLEUX
 Les feuillus constituent moins de 25% de la surface terrière du peuplement.

| CODE RÉSINEUX | CODE FEUILLEUX | CODE FEUILLEUX |
|---------------|----------------|----------------|
| EB | BO | FO |
| EN | BJ | FR |
| EU | BL | FR |
| EV | CB | FR |
| ME | CC | FR |
| MH | CD | FR |
| ML | CE | FR |
| PC | CF | FR |
| PI | CG | FR |
| PN | CH | FR |
| PS | CI | FR |
| PT | CO | FR |
| RA | CP | FR |
| RB | CR | FR |
| TC | CS | FR |
| TO | CT | FR |

CLASSES D'ÂGE

| PEUPLIEMENTS ÉQUILIBRÉS | 10 | 30 | 50 | 70 | 100 | 130 |
|---------------------------|---------------------------|----|----|---------------------------|-----|-----|
| PEUPLIEMENTS INÉQUILIBRÉS | Jeune inéquivalente (JIN) | | | Vieux inéquivalente (VIN) | | |

Structure verticale des tiges de 7 m et plus

| Étage | Intérieur (INF) | Supérieur (SUP) |
|-------------------|--|------------------|
| Monétage (MO) | Un seul étage composé de tiges homogènes en hauteur et en couverture > 25% | |
| B-étage (BI) | Couverture > 25% | Couverture > 25% |
| Multitigeage (MU) | Plus de 2 étages de tiges de 7 mètres et plus. Se retrouvent dans cette catégorie les peuplements jeunes inéquivalents (JIN) et vieux inéquivalents (VIN). | |

| CODE PERTURBATIONS D'ORIGINE | CODE INTERVENTIONS PARTIELLES |
|------------------------------|-------------------------------|
| BR | CA |
| CH | CB |
| DT | CC |
| EP | CD |
| VE | CE |
| BR | CF |
| CB | CG |
| CC | CH |
| CD | CI |
| CE | CJ |
| CF | CK |
| CG | CL |
| CH | CM |
| CI | CN |
| CJ | CO |
| CK | CP |
| CL | CQ |
| CM | CR |
| CN | CS |
| CO | CT |
| CP | CU |
| CQ | CV |
| CR | CW |
| CS | CX |
| CT | CY |
| CU | CZ |
| CV | DA |
| CW | DB |
| CX | DC |
| CY | DD |
| CZ | DE |
| DA | DF |
| DB | DG |
| DC | DH |
| DD | DI |
| DE | DJ |
| DF | DK |
| DG | DL |
| DH | DM |
| DI | DN |
| DJ | DO |
| DK | DP |
| DL | DQ |
| DM | DR |
| DN | DS |
| DO | DT |
| DP | DU |
| DQ | DV |
| DR | DW |
| DS | DX |
| DT | DY |
| DU | DZ |
| DV | EA |
| DW | EB |
| DX | EC |
| DY | ED |
| DZ | EE |
| EA | EF |
| EB | EG |
| EC | EH |
| ED | EI |
| EE | EJ |
| EF | EK |
| EG | EL |
| EH | EM |
| EI | EN |
| EJ | EO |
| EK | EP |
| EL | EQ |
| EM | ER |
| EN | ES |
| EO | ET |
| EP | EU |
| EQ | EV |
| ER | EW |
| ES | EX |
| ET | EY |
| EU | EZ |
| EV | FA |
| EW | FB |
| EX | FC |
| EY | FD |
| EZ | FE |
| FA | FF |
| FB | FG |
| FC | FH |
| FD | FI |
| FE | FJ |
| FF | FK |
| FG | FL |
| FH | FM |
| FI | FN |
| FJ | FO |
| FK | FP |
| FL | FQ |
| FM | FR |
| FN | FS |
| FO | FT |
| FP | FU |
| FQ | FV |
| FR | FW |
| FS | FX |
| FT | FY |
| FU | FZ |
| FV | GA |
| FW | GB |
| FX | GC |
| FY | GD |
| FZ | GE |
| GA | GF |
| GB | GG |
| GC | GH |
| GD | GI |
| GE | GJ |
| GF | GK |
| GG | GL |
| GH | GM |
| GI | GN |
| GJ | GO |
| GK | GP |
| GL | GQ |
| GM | GR |
| GN | GS |
| GO | GT |
| GP | GU |
| GQ | GV |
| GR | GW |
| GS | GX |
| GT | GY |
| GU | GZ |
| GV | HA |
| GW | HB |
| GX | HC |
| GY | HD |
| GZ | HE |
| HA | HF |
| HB | HG |
| HC | HH |
| HD | HI |
| HE | HJ |
| HF | HK |
| HG | HL |
| HH | HM |
| HI | HN |
| HJ | HO |
| HK | HP |
| HL | HQ |
| HM | HR |
| HN | HS |
| HO | HT |
| HP | HU |
| HQ | HV |
| HR | HW |
| HS | HX |
| HT | HY |
| HU | HZ |
| HV | IA |
| HW | IB |
| HX | IC |
| HY | ID |
| HZ | IE |
| IA | IF |
| IB | IG |
| IC | IH |
| ID | II |
| IE | IJ |
| IF | IK |
| IG | IL |
| IH | IM |
| II | IN |
| IJ | IO |
| IK | IP |
| IL | IQ |
| IM | IR |
| IN | IS |
| IO | IT |
| IP | IU |
| IQ | IV |
| IR | IW |
| IS | IX |
| IT | IY |
| IU | IZ |
| IV | JA |
| IW | JB |
| IX | JC |
| IY | JD |
| IZ | JE |
| JA | JF |
| JB | JG |
| JC | JH |
| JD | JI |
| JE | JJ |
| JF | JK |
| JG | JL |
| JH | JM |
| JI | JN |
| JJ | JO |
| JK | JP |
| JL | jq |
| JM | JR |
| JN | JS |
| JO | JT |
| JP | JU |
| jq | JV |
| JR | JW |
| JS | JX |
| JT | JY |
| JU | JZ |
| JV | KA |
| JW | KB |
| JX | KC |
| JY | KD |
| JZ | KE |
| KA | KF |
| KB | KG |
| KC | KH |
| KD | KI |
| KE | KJ |
| KF | KK |
| KG | KL |
| KH | KM |
| KI | KN |
| KJ | KO |
| KL | KP |
| KM | KQ |
| KN | KR |
| KO | KS |
| KP | KT |
| KQ | KU |
| KR | KV |
| KS | KW |
| KT | KX |
| KU | KY |
| KV | KZ |
| KW | LA |
| KX | LB |
| KY | LC |
| KZ | LD |
| LA | LE |
| LB | LF |
| LC | LG |
| LD | LH |
| LE | LI |
| LF | LJ |
| LG | LK |
| LH | LL |
| LI | LN |
| LJ | LO |
| LK | LP |
| LL | LQ |
| LN | LR |
| LO | LS |
| LP | LT |
| LQ | LU |
| LR | LV |
| LS | LW |
| LT | LX |
| LU | LY |
| LV | LZ |
| LW | MA |
| LX | MB |
| LY | MC |
| LZ | MD |
| MA | ME |
| MB | MF |
| MC | MG |
| MD | MH |
| ME | MI |
| MF | MJ |
| MG | MK |
| MH | ML |
| MI | MM |
| MJ | MN |
| MK | MO |
| ML | MP |
| MM | MQ |
| MN | MR |
| MO | MS |
| MP | MT |
| MQ | MU |
| MR | MV |
| MS | MW |
| MT | MX |
| MU | MY |
| MV | MZ |
| MW | NA |
| MX | NB |
| MY | NC |
| MZ | ND |
| NA | NE |
| NB | NF |
| NC | NG |
| ND | NH |
| NE | NI |
| NF | NJ |
| NG | NK |
| NH | NL |
| NI | NM |
| NJ | NO |
| NK | NP |
| NL | NQ |
| NM | NR |
| NO | NS |
| NP | NT |
| NQ | NU |
| NR | NV |
| NS | NW |
| NT | NX |
| NU | NY |
| NV | NZ |
| NW | OA |
| NX | OB |
| NY | OC |
| NZ | OD |
| OA | OE |
| OB | OF |
| OC | OG |
| OD | OH |
| OE | OI |
| OF | OJ |
| OG | OK |
| OH | OL |
| OI | OM |
| OJ | ON |
| OK | OO |
| OL | OP |
| OM | OQ |
| ON | OR |
| OO | OS |
| OP | OT |
| OQ | OU |
| OR | OV |
| OS | OW |
| OT | OX |
| OU | OY |
| OV | OZ |
| OW | PA |
| OX | PB |
| OY | PC |
| OZ | PD |
| PA | PE |
| PB | PF |
| PC | PG |
| PD | PH |
| PE | PI |
| PF | PJ |
| PG | PK |
| PH | PL |
| PI | PM |
| PJ | PN |
| PK | PO |
| PL | PP |
| PM | PQ |
| PN | PR |
| PO | PS |
| PP | PT |
| PQ | PU |
| PR | PV |
| PS | PW |
| PT | PX |
| PU | PY |
| PV | PZ |
| PW | QA |
| PX | QB |
| PY | QC |
| PZ | QD |
| QA | QE |
| QB | QF |
| QC | QG |
| QD | QH |
| QE | QI |
| QF | QJ |
| QG | QK |
| QH | QL |
| QI | QM |
| QJ | QN |
| QK | QO |
| QL | QP |
| QM | QQ |
| QN | QR |
| QO | QS |
| QP | QT |
| QQ | QU |
| QR | QV |
| QS | QW |
| QT | QX |
| QU | QY |
| QV | QZ |
| QW | RA |
| QX | RB |
| QY | RC |
| QZ | RD |
| RA | RE |
| RB | RF |
| RC | RG |
| RD | RH |
| RE | RI |
| RF | RJ |
| RG | RK |
| RH | RL |
| RI | RM |
| RJ | RN |
| RK | RO |
| RL | RP |
| RM | RQ |
| RN | RR |
| RO | RS |
| RP | RT |
| RQ | RU |
| RR | RV |
| RS | RW |
| RT | RX |
| RU | RY |
| RV | RZ |
| RW | SA |
| RX | SB |
| RY | SC |
| RZ | SD |
| SA | SE |
| SB | SF |
| SC | SG |
| SD | SH |
| SE | SI |
| SF | SJ |
| SG | SK |
| SH | SL |
| SI | SM |
| SJ | SN |
| SK | SO |
| SL | SP |
| SM | SQ |
| SN | SR |
| SO | SS |
| SP | ST |
| SQ | SU |
| SR | SV |
| SS | SW |
| ST | SX |
| SU | SY |
| SV | SZ |
| SW | TA |
| SX | TB |
| SY | TC |
| SZ | TD |
| TA | TE |
| TB | TF |
| TC | TG |
| TD | TH |
| TE | TI |
| TF | TJ |
| TG | TK |
| TH | TL |
| TI | TM |
| TJ | TN |
| TK | TO |
| TL | TP |
| TM | TQ |
| TN | TR |
| TO | TS |
| TP | TT |
| TQ | TU |
| TR | TV |
| TS | TW |
| TT | TX |
| TU | TY |
| TV | TZ |
| TW | UA |
| TX | UB |
| TY | UC |
| TZ | UD |
| UA | UE |
| UB | UF |
| UC | UG |
| UD | UH |
| UE | UI |
| UF | UJ |
| UG | UK |
| UH | UL |
| UI | UM |
| UJ | UN |
| UK | UO |
| UL | UP |
| UM | UQ |