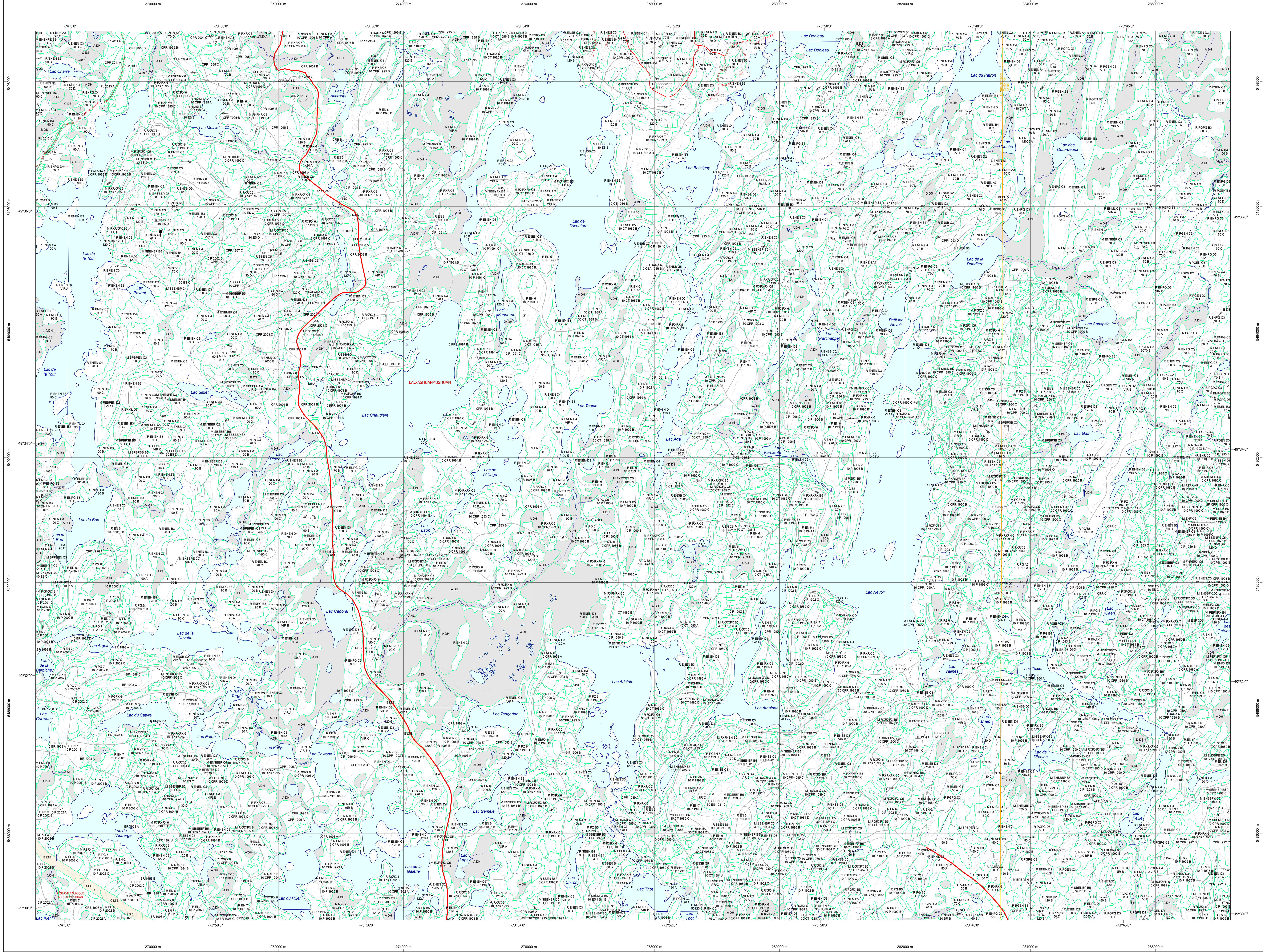


Carte écoforestière



STRATIFICATION ECOFORESTIERE

Paramètres utilisés pour la cartographie

Table with 6 columns: Code, Type de description, Tm, Tm, Indicateur, Non forestier. Rows include categories like E1, E2, E3, etc.

Exemple d'appellation

Table showing an example of a forest stand name and its corresponding codes for elevation and forest type.

TYPES DE COUVERT ET ESSENCES SELON LE PROGRAMME D'INVENTAIRE

RELIEUX: Peuplement dans plus de 75% de la surface terrain totale et occupé par les essences mélangées.

FEUILLES: Peuplement dans plus de 75% de la surface terrain totale et occupé par les essences feuillues.

MELANGES: Peuplement des essences feuillues et d'essences résineuses totalisant plus de 25% et moins de 75% de la surface terrain totale.

Table mapping forest codes to species names, such as E1 to Efficace blanche and M1 to Mélange mixte.

Table mapping forest codes to species names, similar to the previous table but for a different set of species.

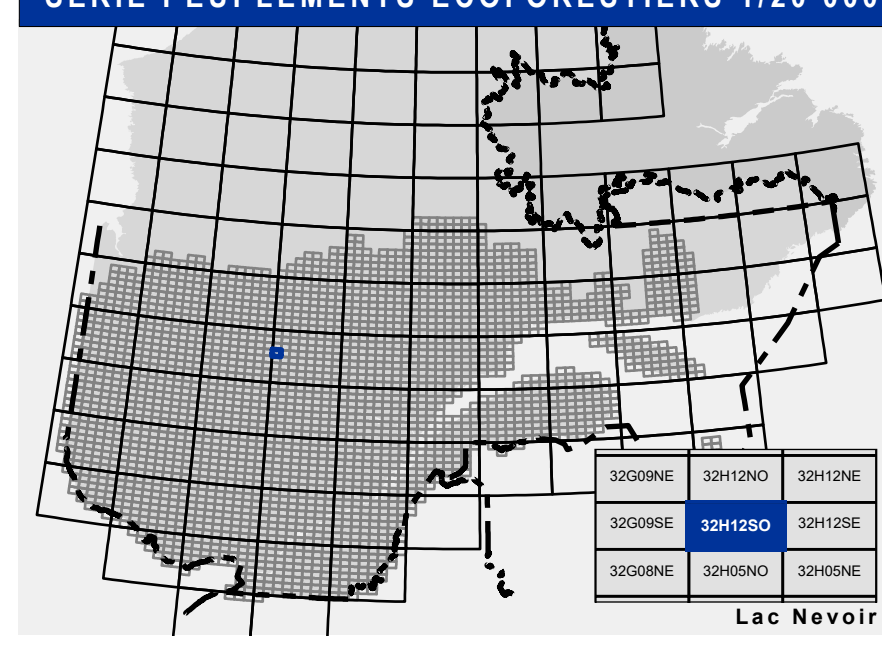
Table titled 'INDICES DENSITE-HAUTEUR' showing average height and density data for different forest classes.

Table titled 'CLASSES D'AGE' showing age class distributions for regular and irregular forest stands.

Table mapping codes to descriptions of forest perturbations and management interventions.

Table mapping codes to descriptions of forest types and slope classes.

SERIE PEUPLIEMENTS ECOFORESTIERS 1/20 000



Legend for various symbols and lines used on the map, including communication routes, infrastructure, contours, and forest types.

Legend for symbols representing forest types, matadonnées (survey data), and various boundaries.

Legend for symbols representing sources, forest information, and realization details of the map.

Legend for symbols representing forest types, forest information, and realization details.