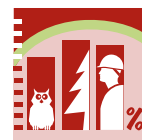




A forest for life!



The Chief Forester's Office

Taking action to ensure sustainable forest management in Québec





The Chief Forester's Office makes significant contributions to sustainable forest management in Québec through the accomplishment of its mandates. Over the next two years, many professional foresters will provide expert guidance concerning various and diverse projects to ensure and maintain this contribution. We invite all those who are concerned about sustainable forest management in Québec to follow these projects, ask us questions and send us comments and suggestions.



"Taking concrete action to support sustainable forest management in Québec"

The creation of the position of Chief Forester was one of the central recommendations in the report submitted to the Québec government in December 2004 by the Commission that examined the management of Québec's public forests (The Coulombe Commission).

In 2005, the National Assembly unanimously passed Bill 94 creating the position of Chief Forester that I have held since that time. This position gives me the following responsibilities:

- Prepare the forest management manual;
- Define the methods and tools used to calculate the annual allowable cut;
- Determine the annual allowable cut for Québec's public forests;
- Draw up a five-years review of the state of the public forest regarding the sustainable forest management;
- Advise the Minister of Natural Resources and Wildlife on any forestry matter that requires the government's attention or action.

These responsibilities are important, because they embody the underlying mission of the Chief Forester which is "to ensure the ongoing viability of Québec's public forests in keeping with the principles of sustainable development". My goal is to perform these duties with support from my team in ways that respect our chosen values of objectivity and integrity, rigour and expertise, while striving to improve our approach on an ongoing basis.

Thanks to the expertise and enthusiasm of my team members. I am confident that I will be able to perform my duties effectively. We are solidly committed to implement the necessary concrete actions to ensure the ongoing sustainability of our forests and make them a healthy living environment.

The Chief Forester

Pierre Levac, ing.f. M.Sc.





Sustainable forest management manual

The Chief Forester has undertaken the process of preparing a sustainable forest management manual (SFMM). Like the current manual, the SFMM will provide the information needed to guide foresters as they prepare strategic forest management plans and determine the annual allowable cut for a given area. Therefore, the manual plays a key role in forest management in Québec. In order to continue to play this role it needs to be updated to reflect new guidelines in the field of sustainable forest management (SFM). The implementation of these guidelines is a major challenge, particularly concerning integrated and regionalized resource management as well as objective and ecosystemic based resource management.



The preparation of the SFMM will involve, as a first step, the updating and reorganization of various sections of the existing manual. Then, new sections will be added to provide information on forest management actions and practices that need to be taken in the forest to meet various SFM objectives. The content will be drafted mainly with input from expert committees who will provide the most up-to-date scientific knowledge available. Using the same process and in order to provide specific help for decision-making, the manual will offer foresters a guide to current knowledge concerning the environmental, economic and social impacts of the proposed management solutions. The manual will be published in an electronic format, which will greatly facilitate its updating and distribution. The first edition is scheduled for release in early 2009.



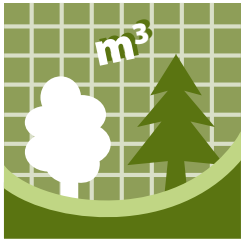
Methods and tools used to calculate the annual allowable cut

The recommendations of the Coulombe Commission, released in December 2004, highlighted the limits of the then current process used to calculate the annual allowable cut (AAC). Following a simulation test, using the computer program Sylva II, several weaknesses were found in the calculation model, as well as problems with the numerous supporting models and hypotheses used at the time. To remedy these deficiencies, a team from the Chief Forester's office (CFO) began to develop a new calculation process using modern, high-performance tools specifically developed for calculating the AAC.

As a result of this process, the decision was made to use two commercial software packages, Spatial Woodstock and Stanley by Remsoft Inc., for the upcoming calculations. These applications are already being used around the world, and allow economic, environmental and social variables to be included in the calculation process. They also have functions to help estimate the impact of the spatial distribution of forest operations on the AAC.

Although Spatial Woodstock is an effective modelling tool, it is still the task of the professional forester to enter most of the basic data : growth curves, classification of forest strata into management series, etc. Inputting all this information using Spatial Woodstock software is a time consuming process that introduce the possibility of error. To facilitate its use, the CFO has undertaken the task of designing add-on software for Spatial Woodstock in order to process the information needed for modelling and transform it into data that can be used directly by Spatial Woodstock. This add-on software will standardize the implementation process, optimize the results of the management scenarios, reduce the time needed to build models and reduce the risk of error from the manual input of data. It will also constitute a modern decision-making tool for SFM, by providing rapid feedback through the comparison of different management strategies. The system should be operational in time for the AAC calculations for the period 2013-2018.

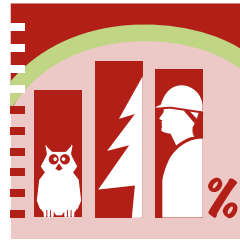




Annual allowable cut calculations

The CFO is responsible for determining the AAC in 74 forest management units (FMUs) and around 130 forest reserves in Québec. This involves assessing the impact of development projects, draft policies and all other related issues that affect forestry practices and the management of forest resources on the AAC. Another important element is the estimation of the volume of timber that may be harvested on a one-off basis without affecting the AAC. The Office also analyzes and validates general forest management plans. Finally, it is necessary to ensure the reliability and the accuracy of the different elements of the AAC calculation by the implementation of a structured quality control system.

In the pursuit of its mission, the CFO has set up four regional divisions covering the 17 administrative regions in Québec. This territorial coverage is based on efficiency, and the need to group together regions with similar forestry profiles. Most of the staff at the CFO work on the AAC calculations for these regions, and together they have a broad expertise and experience in all regions of Québec. In addition to the main task of calculating the AAC, the regional staff represent the CFO on regional natural resource and land committees and work with various regional stakeholders. The regional teams ensure that the work processes, data and management hypotheses used match the specific features of each area examined.

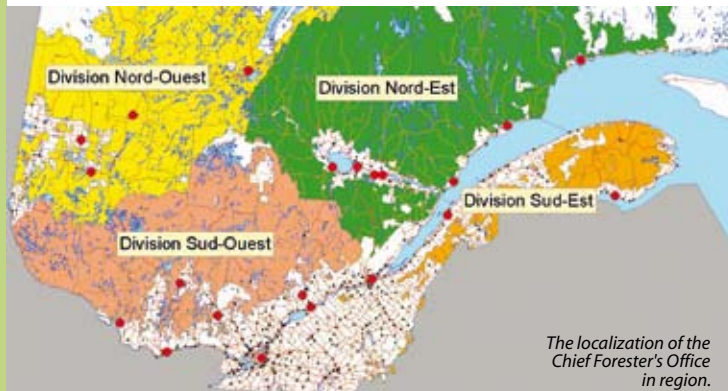


Sustainable forest management report

The CFO is responsible for assessing sustainable forest management (SFM) performance in Québec. The first sustainable forest management report (SFMR) will describe the state of the public forests from 2000 to 2008, providing information on most of the concerns raised by the Québec public, in particular with respect to environmental protection, socioeconomic advantages, respect for First Nations rights and public participation. The report will be submitted in the fall of 2009 to the Minister of Natural Resources and Wildlife who will table it in the National Assembly.

The process used to prepare the SFMR will be based on worldwide trends and international standards and will list public concerns and create an assessment framework for SFM and forest audits. To ensure transparency, the process proposed by the CFO will ensure participation by the general public and specialists at all times. The SFMR will include analysis, observations and recommendations that will facilitate decision concerning forest management in a sustainable development context. It will highlight Québec's strengths and weaknesses in terms of SFM to allow improvement to be made to forestry practices to make them more sustainable.

The members of the SFMR team are trained to perform audits. They have experience in forest management, biology and the various fields of socio-economic analysis, public consultation and First Nation participation. They will act independently from the individuals and work they assess. In addition to complying with the CFO code of ethics and conduct, the SFMR team will define its own ethical principles for its audit practices and its relationship with all interested parties.



The localization of the Chief Forester's Office in region.

To find out more:

Visit our website at:
www.forestierenchef.gouv.qc.ca

or contact us at:

Head Office
The Chief Forester's Office.
845, boulevard Saint-Joseph
Roberval (Québec) G8H 2L6
Phone: (418) 275-7770
Fax: (418) 275-8884
E-mail: bureau@forestierenchef.gouv.qc.ca

The Chief Forester's
Office

Québec 